

Day-Brite



by Signify

Industrial

Vaporlume LED V2

4' sealed industrial
3500 to 7000 lm



Control options available

Day-Brite / CFI Vaporlume LED sealed industrial V2 is a specialized wet location, IP rated product designed for use in both indoor and outdoor environments. It is a wet location listed, non-corrosive luminaire available in both fluorescent and LED light sources.

Project: _____
 Location: _____
 Cat.No: _____
 Type: _____
 Lumens: _____ Qty: _____
 Notes: _____

Ordering guide

Example: V2WAE51L840-4-UNV-MD360W

Family	Application	Lens	Hubs Installed	Lumen Package	Color Temp.	Length	Voltage	Driver	Options
V2	W				—	—	—	—	
V2 Vaporlume	W Wet location	A DR Acrylic P Polycarbonate L Enhanced LED Acrylic	E Ends only T Top only B Both ends and top	35L 3500 nominal lumens 43L 4300 nominal lumens 51L 5100 nominal lumens (25°C ambient) 51LH 5100 nominal lumens (-35°C to 40°C) 70L 7000 nominal lumens Other lumen packages may be ordered in increments of 100lm up to 7000 lumens.	830 80 CRI, 3000K 835 80 CRI, 3500K 840 80 CRI, 4000K 850 80 CRI, 5000K	4 4'	UNV Universal Voltage, 120-277V 347' 347V 480' 480V	blank 0-10V dimming SDIM ² Step dimming to 40% input power	MD360W ⁵ Wet location occupancy sensor, external MD360WD ⁵ Wet location occupancy sensor, (ON/DIM to 10%) WHP Wide Beam Optic EMLED ³ Integral Emergency IP67 Protection against effects of immersion GLR Fusing, fast blow TR Torx T-15 tamper resistant stainless steel latches (TPDH tamper proof driver required) SWZCSH ⁴ Interact Pro scalable high bay sensor with integral daylight & occupancy sensing, advanced grouping with dwell time SNH200 ⁴ Integral EasySense occupancy & daylight sensor, with advanced SpaceWise type wireless grouping

Footnotes

- All 347V and 480V models available only for (-20°C to 25°C) ambient. Not available for use with 51LH or SDIM options.
- Step dim (SDIM) option not available on 51LH.
- EMLD option not available on 347V or 480V models.
- High bay motion detector. Motion sensing zone is extremely limited if used below 15' mounting height.
- Not available with SWZCSH or SNH200 option.

Accessories (order separately)

- TBK – Stainless Steel Top Bracket Kit (pair of brackets plus hardware)
- EBK – Stainless Steel End Bracket Kit (pair of brackets plus hardware)
- WBK – Stainless Steel Wraparound Bracket Kit (pair of brackets)
- FKR-126 – Chain Hanger Set (requires TBK)
- TPDTH – Tamper proof driver, Torx T-15 head pin drive and handle (required with TR option)
- V2/DW-4ARL-CS – 4' Acrylic Replacement Lens
- V2/DW-4PRL – 4' Polycarbonate Replacement Lens
- V2/DW-4LRA – 4' LED Frosted Acrylic Replacement Lens



interact
ready.

V2 Vaporlume LED sealed industrial

4', 3500 to 7000 lumens

Application

- Ideally suited for use in refrigerated cold storage, industrial, parking garage, and canopy applications.
- Acceptable for outdoor as well as indoor installations.
- Can be surface (wall/ceiling) or suspended mounted unless otherwise specified.
- Wet Location – Areas of high humidity, water vapor, rain, incidental water spray, or other non-corrosive or nonflammable liquid.
- Excellent for applications such as garages, stairwells, storage areas, horizontal shelf-mount refrigerated cases, and cold storage.
- Mounting brackets available, order separately.
- IP65 rating standard. IP67 configuration available.
- LED sources provide excellent low temperature performance. This product can replace a fluorescent model in cold environments with significant energy savings.
- 51LH model listed for use in -35°C to 40°C ambient. 50,000 hour L70 lumen maintenance.
- 35L/43L models listed for use in -20°C to 40°C ambient. 100,000 hour L70 lumen maintenance.
- 51L/70L models listed for use in -20°C to 25°C ambient. L70 lumen maintenance is 100,000 hours for 51L model, and 50,000 hours for 70L.
- NSF Certified for Non-Food Zone Installations.
- EMLLED 1100lm nominal in DC mode
- WHP wide optic is an acrylic lens factory installed on the LED arrays, provides compliance to DLC requirements for parking garage luminaires

Construction/Finish

- Non-conductive, non-corrosive housing.
- Smooth exterior surface for easy cleaning.
- White one piece, molded fiberglass reinforced polyester body. No rusting, no oxidation, and no corrosion.
- Standard acrylic lens (A) is stippled sheet of .130" nominal thickness.
- Optional LED lens (L) designed specifically to further reduce pixilated glare from LED's. Linear rib profile.
- Optional polycarbonate lens (P) will not be yellowed by LED sources because they do not produce UV.

- Continuous compressible closed cell gasket provides tight seal between plastic enclosure and luminaire body.
- Stainless steel cam action latches.
- Lighting channel painted after fabrication with polyester powder coating.
- Two gasketed threaded (½" trade size) wet location hubs installed on ends.

Electrical

- High efficiency LEDs provide up to 100,000 hour rated life (L70, defined as 70% lumen maintenance @ rated maximum ambient).
- Dimming to 5% on 0-10V controls standard. Step dim (SDIM) option available, 100/40% levels.
- Driver and LED boards are accessible from below. LED boards are individually replaceable if required.
- Combinations are available providing as much as 117 delivered lumens per Watt.
- Nominal lumen packages range from 3,500 to 7,000 lumens, providing flexibility to optimize light levels for a specific application.
- LED sources provide full illumination in low temperature applications, unlike fluorescent sources that provide reduced light levels in very cold environments.
- LED sources can be frequently switched with no negative impact on life.
- Minimum 80 CRI provides smooth color rendering that rivals or exceeds performance of fluorescent lamps.
- Light output from the luminaire contains no infrared or ultraviolet energy, so the light won't heat or fade the objects being lit.
- Available motion sensor further increases energy savings in areas where occupancy is not continuous.

Labels

- cETLus listed to UL 1598. Suitable for use in wet locations.
- 5 Year Limited Warranty, www.signify.com/warranties
- Certain luminaire components may be adversely affected by contaminants. If sulfur, chlorine, or petroleum based solutions, or other contaminants will be in the area of operation, please consult factory as damage caused by these contaminants are not covered under our limited warranty.

SNH200 EasySense

- Philips field apps allow programming of occupancy & daylight sensing parameters and fine-tuning of light levels during installation. It can also be used for grouping of fixtures.
- Download "Philips field apps" from the Google Play Store.

Register for the commissioning app at <http://registration.componentcloud.philips.com/appregistration/>.

- The app works on certain Android phones with NFC or IR. See Recommended Phones and the EasySense App User Manual in the download section at <http://www.usa.lighting.philips.com/products/lighting-components/easysense> and follow the "View Downloads" link to register for access to the download area. Navigate to Connected-Lighting-Components and then Philips-EasySense-Sensors to find downloads.

Interact Pro scalable sensor for Foundation, Advanced & Enterprise tiers (SWZCSH and an evolution of SpaceWise)

- SWZCSH is a connected sensor with integral occupancy and daylight sensing and supports wireless mesh connectivity.
- The sensor works in the Foundation mode (similar to SpaceWise) when configured without a gateway or in an Interact Pro Advanced or Enterprise mode if a compatible gateway is used.
- Interact Pro includes an App, a portal and a broad portfolio of wireless luminaires, lamps and retrofit kits all working on the same system.
- Startup is implemented via Interact Pro App (Android or iPhone) & BlueTooth connectivity. The App provides flexibility to choose between a gateway or non gateway mode for setup.
- Setup with the gateway requires wired internet access to the gateway. It is possible to add a gateway at a later point.
- Prepare project configuration steps remotely and use IRT9015 remote onsite to identify and group devices together.
- Compatible with:
 - UID8451/10 wireless dimmer switch
 - SWS200 wireless scene switch
 - Battery powered IP42 presence sensor OCC sensor IA CM WH 10/1
 - Battery powered IP42 presence & daylight sensor OCC-DL sensor IA CM IP42 WH
 - LCN3110/05 battery powered IP65 presence sensor OCC sensor IA CM IP65 WH
 - LCN3120/05 battery powered IP65 presence & daylight sensor OCC-DL sensor IA CM IP65 WH
- For more information on Interact Pro visit: www.interact-lighting.com/interactproscalablesystem

V2 Vaporlume LED sealed industrial

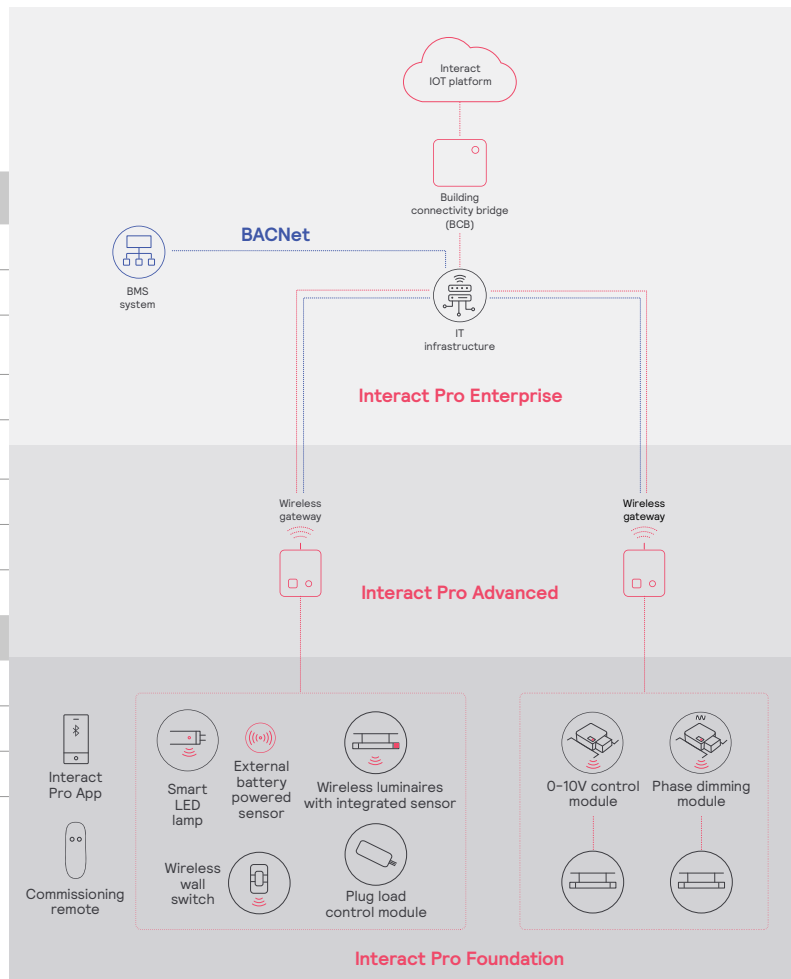
4', 3500 to 7000 lumens

Interact Pro scalable system			
	Foundation	Advanced	Enterprise
Dimming, grouping, and zoning	✓	✓	✓
Bluetooth and ZigBee enabled	✓	✓	✓
Motion sensing and daylight harvesting	✓	✓	✓
Integration with 0-10V and phase dimming fixtures	✓	✓	✓
Code compliance	✓	✓	✓
Granular dimming and dwell time	✓	✓	✓
Energy reporting and monitoring		✓	✓
Scheduling		✓	✓
Demand response		✓	✓
BMS integration (BACnet)			✓
Floor plan visualization			✓
IoT sensors for wellness			✓
IoT Apps for productivity			✓

Currently supported maximum system size

To be able to design the lighting system correctly for the customer, it is important to know the prime characteristics of the system, its possibilities and limitations.

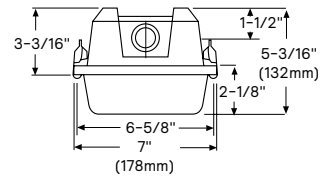
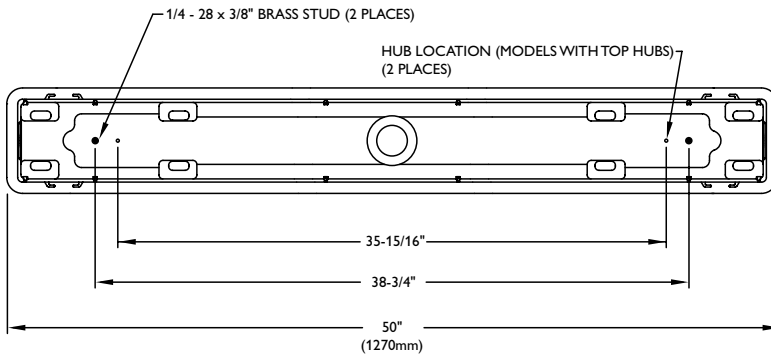
System level	
Total number of gateways	Unlimited
Total number of devices	200 per network
• luminaires with integrated sensors	150
• smart TLEDs	150
Total number of ZGP devices (sensors and switches)	50
• sensors	30
• switches	50
• zones and groups	64
Group level	
Recommended number of lights	40 (recommended 25)
Number of ZGP devices	5
Number of scenes	16



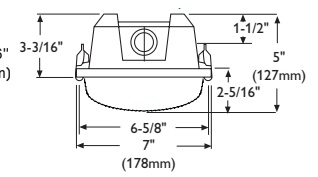
V2 Vaporlume LED sealed industrial

4', 3500 to 7000 lumens

Dimensions



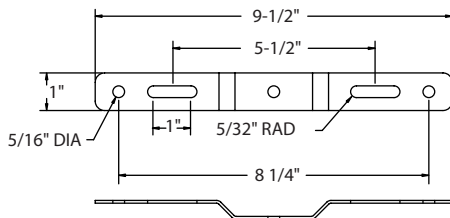
Shallow acrylic (A) and polycarbonate (P) lens



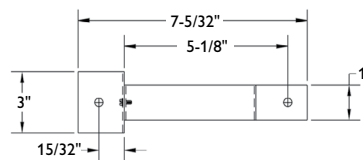
Enhanced LED acrylic lens (L)

Mounting Brackets

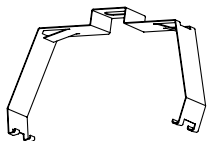
TBK - Top Mounting Bracket



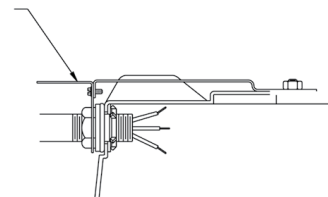
EBK - End Mounting Bracket



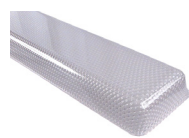
WBK - Wraparound Mounting Bracket



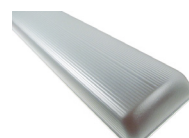
EBK - End Mounting Bracket



Acrylic Lens



Polycarbonate Lens



LED Frosted Acrylic Lens

V2 Vaporlume LED sealed industrial

4', 3500 to 7000 lumens

4' Vaporlume LED V2, 3500 nominal lumens LER-117

Catalog No. V2WAE35L840-4 Test No. 32643 S/MH 1.2 Source LED Input Watts 32 Delivered Lumens 3699	Candlepower <table border="1"> <thead> <tr> <th>Angle</th> <th>End</th> <th>45</th> <th>Cross</th> <th>Back-45</th> </tr> </thead> <tbody> <tr><td>0</td><td>1250</td><td>1250</td><td>1250</td><td>1250</td></tr> <tr><td>5</td><td>1244</td><td>1239</td><td>1243</td><td>1239</td></tr> <tr><td>15</td><td>1204</td><td>1201</td><td>1199</td><td>1201</td></tr> <tr><td>25</td><td>1112</td><td>1114</td><td>1106</td><td>1114</td></tr> <tr><td>35</td><td>966</td><td>964</td><td>949</td><td>964</td></tr> <tr><td>45</td><td>778</td><td>777</td><td>841</td><td>777</td></tr> <tr><td>55</td><td>576</td><td>685</td><td>708</td><td>685</td></tr> <tr><td>65</td><td>371</td><td>509</td><td>472</td><td>509</td></tr> <tr><td>75</td><td>193</td><td>250</td><td>271</td><td>250</td></tr> <tr><td>85</td><td>49</td><td>91</td><td>96</td><td>91</td></tr> <tr><td>95</td><td>19</td><td>36</td><td>28</td><td>36</td></tr> <tr><td>105</td><td>17</td><td>30</td><td>20</td><td>30</td></tr> <tr><td>115</td><td>10</td><td>28</td><td>20</td><td>28</td></tr> <tr><td>125</td><td>4</td><td>19</td><td>19</td><td>19</td></tr> <tr><td>135</td><td>2</td><td>10</td><td>17</td><td>10</td></tr> <tr><td>145</td><td>1</td><td>3</td><td>9</td><td>3</td></tr> <tr><td>155</td><td>1</td><td>1</td><td>2</td><td>1</td></tr> <tr><td>165</td><td>1</td><td>1</td><td>1</td><td>1</td></tr> <tr><td>175</td><td>1</td><td>1</td><td>1</td><td>1</td></tr> </tbody> </table>					Angle	End	45	Cross	Back-45	0	1250	1250	1250	1250	5	1244	1239	1243	1239	15	1204	1201	1199	1201	25	1112	1114	1106	1114	35	966	964	949	964	45	778	777	841	777	55	576	685	708	685	65	371	509	472	509	75	193	250	271	250	85	49	91	96	91	95	19	36	28	36	105	17	30	20	30	115	10	28	20	28	125	4	19	19	19	135	2	10	17	10	145	1	3	9	3	155	1	1	2	1	165	1	1	1	1	175	1	1	1	1	Coefficients of Utilization EFFECTIVE FLOOR CAVITY REFLECTANCE 20 PER (pfc=0.20) <table border="1"> <thead> <tr> <th rowspan="2">pcc</th> <th colspan="3">80</th> <th colspan="3">70</th> <th colspan="2">50</th> </tr> <tr> <th>70</th> <th>50</th> <th>30</th> <th>70</th> <th>50</th> <th>30</th> <th>50</th> <th>30</th> </tr> </thead> <tbody> <tr><td>pw</td><td></td><td></td><td></td><td></td><td></td><td></td><td></td><td></td></tr> <tr><td>RCR</td><td></td><td></td><td></td><td></td><td></td><td></td><td></td><td></td></tr> <tr><td>0</td><td>117</td><td>117</td><td>117</td><td>114</td><td>114</td><td>114</td><td>110</td><td>110</td></tr> <tr><td>1</td><td>108</td><td>103</td><td>97</td><td>105</td><td>100</td><td>95</td><td>94</td><td>92</td></tr> <tr><td>2</td><td>97</td><td>89</td><td>81</td><td>94</td><td>86</td><td>80</td><td>82</td><td>77</td></tr> <tr><td>3</td><td>89</td><td>78</td><td>69</td><td>85</td><td>76</td><td>68</td><td>72</td><td>66</td></tr> <tr><td>4</td><td>81</td><td>68</td><td>59</td><td>79</td><td>68</td><td>58</td><td>65</td><td>56</td></tr> <tr><td>5</td><td>75</td><td>61</td><td>53</td><td>71</td><td>59</td><td>52</td><td>57</td><td>50</td></tr> <tr><td>6</td><td>68</td><td>55</td><td>46</td><td>67</td><td>54</td><td>46</td><td>52</td><td>45</td></tr> <tr><td>7</td><td>64</td><td>50</td><td>40</td><td>61</td><td>48</td><td>40</td><td>46</td><td>40</td></tr> <tr><td>8</td><td>58</td><td>46</td><td>36</td><td>57</td><td>45</td><td>36</td><td>42</td><td>35</td></tr> <tr><td>9</td><td>56</td><td>41</td><td>34</td><td>54</td><td>40</td><td>33</td><td>40</td><td>33</td></tr> <tr><td>10</td><td>52</td><td>39</td><td>30</td><td>51</td><td>38</td><td>30</td><td>36</td><td>29</td></tr> </tbody> </table>								pcc	80			70			50		70	50	30	70	50	30	50	30	pw									RCR									0	117	117	117	114	114	114	110	110	1	108	103	97	105	100	95	94	92	2	97	89	81	94	86	80	82	77	3	89	78	69	85	76	68	72	66	4	81	68	59	79	68	58	65	56	5	75	61	53	71	59	52	57	50	6	68	55	46	67	54	46	52	45	7	64	50	40	61	48	40	46	40	8	58	46	36	57	45	36	42	35	9	56	41	34	54	40	33	40	33	10	52	39	30	51	38	30	36	29
	Angle	End	45	Cross	Back-45																																																																																																																																																																																																																																																		
0	1250	1250	1250	1250																																																																																																																																																																																																																																																			
5	1244	1239	1243	1239																																																																																																																																																																																																																																																			
15	1204	1201	1199	1201																																																																																																																																																																																																																																																			
25	1112	1114	1106	1114																																																																																																																																																																																																																																																			
35	966	964	949	964																																																																																																																																																																																																																																																			
45	778	777	841	777																																																																																																																																																																																																																																																			
55	576	685	708	685																																																																																																																																																																																																																																																			
65	371	509	472	509																																																																																																																																																																																																																																																			
75	193	250	271	250																																																																																																																																																																																																																																																			
85	49	91	96	91																																																																																																																																																																																																																																																			
95	19	36	28	36																																																																																																																																																																																																																																																			
105	17	30	20	30																																																																																																																																																																																																																																																			
115	10	28	20	28																																																																																																																																																																																																																																																			
125	4	19	19	19																																																																																																																																																																																																																																																			
135	2	10	17	10																																																																																																																																																																																																																																																			
145	1	3	9	3																																																																																																																																																																																																																																																			
155	1	1	2	1																																																																																																																																																																																																																																																			
165	1	1	1	1																																																																																																																																																																																																																																																			
175	1	1	1	1																																																																																																																																																																																																																																																			
pcc	80			70			50																																																																																																																																																																																																																																																
	70	50	30	70	50	30	50	30																																																																																																																																																																																																																																															
pw																																																																																																																																																																																																																																																							
RCR																																																																																																																																																																																																																																																							
0	117	117	117	114	114	114	110	110																																																																																																																																																																																																																																															
1	108	103	97	105	100	95	94	92																																																																																																																																																																																																																																															
2	97	89	81	94	86	80	82	77																																																																																																																																																																																																																																															
3	89	78	69	85	76	68	72	66																																																																																																																																																																																																																																															
4	81	68	59	79	68	58	65	56																																																																																																																																																																																																																																															
5	75	61	53	71	59	52	57	50																																																																																																																																																																																																																																															
6	68	55	46	67	54	46	52	45																																																																																																																																																																																																																																															
7	64	50	40	61	48	40	46	40																																																																																																																																																																																																																																															
8	58	46	36	57	45	36	42	35																																																																																																																																																																																																																																															
9	56	41	34	54	40	33	40	33																																																																																																																																																																																																																																															
10	52	39	30	51	38	30	36	29																																																																																																																																																																																																																																															
Comparative yearly lighting energy cost per 1000 lumens – \$2.03 based on 3000 hrs. and \$.08 pwr KWH. Photometric values based upon tests performed in compliance with LM-79.						Light Distribution <table border="1"> <thead> <tr> <th>Degrees</th> <th>Lumens</th> <th>% Luminaire</th> </tr> </thead> <tbody> <tr><td>0-30</td><td>969</td><td>26.1</td></tr> <tr><td>0-40</td><td>1569</td><td>42.3</td></tr> <tr><td>0-60</td><td>2772</td><td>74.8</td></tr> <tr><td>0-90</td><td>3602</td><td>97.1</td></tr> <tr><td>90-120</td><td>81</td><td>2.2</td></tr> <tr><td>90-130</td><td>95</td><td>2.6</td></tr> <tr><td>90-150</td><td>105</td><td>2.8</td></tr> <tr><td>90-180</td><td>106</td><td>2.9</td></tr> <tr><td>0-180</td><td>3708</td><td>100.0</td></tr> </tbody> </table>				Degrees	Lumens	% Luminaire	0-30	969	26.1	0-40	1569	42.3	0-60	2772	74.8	0-90	3602	97.1	90-120	81	2.2	90-130	95	2.6	90-150	105	2.8	90-180	106	2.9	0-180	3708	100.0	Average Luminance <table border="1"> <thead> <tr> <th>Angle</th> <th>End</th> <th>45°</th> <th>Cross</th> </tr> </thead> <tbody> <tr><td>45</td><td>5069</td><td>4222</td><td>4360</td></tr> <tr><td>55</td><td>4543</td><td>4228</td><td>4105</td></tr> <tr><td>65</td><td>865</td><td>3770</td><td>3222</td></tr> <tr><td>75</td><td>3096</td><td>2402</td><td>2333</td></tr> <tr><td>85</td><td>1821</td><td>1312</td><td>1164</td></tr> </tbody> </table>				Angle	End	45°	Cross	45	5069	4222	4360	55	4543	4228	4105	65	865	3770	3222	75	3096	2402	2333	85	1821	1312	1164																																																																																																																																																																																				
Degrees	Lumens	% Luminaire																																																																																																																																																																																																																																																					
0-30	969	26.1																																																																																																																																																																																																																																																					
0-40	1569	42.3																																																																																																																																																																																																																																																					
0-60	2772	74.8																																																																																																																																																																																																																																																					
0-90	3602	97.1																																																																																																																																																																																																																																																					
90-120	81	2.2																																																																																																																																																																																																																																																					
90-130	95	2.6																																																																																																																																																																																																																																																					
90-150	105	2.8																																																																																																																																																																																																																																																					
90-180	106	2.9																																																																																																																																																																																																																																																					
0-180	3708	100.0																																																																																																																																																																																																																																																					
Angle	End	45°	Cross																																																																																																																																																																																																																																																				
45	5069	4222	4360																																																																																																																																																																																																																																																				
55	4543	4228	4105																																																																																																																																																																																																																																																				
65	865	3770	3222																																																																																																																																																																																																																																																				
75	3096	2402	2333																																																																																																																																																																																																																																																				
85	1821	1312	1164																																																																																																																																																																																																																																																				

4' Vaporlume LED V2, 4300 nominal lumens LER-116

Catalog No. V2WAE43L840-4 Test No. 32642 S/MH 1.2 Source LED Input Watts 38 Delivered Lumens 4431	Candlepower <table border="1"> <thead> <tr> <th>Angle</th> <th>End</th> <th>45</th> <th>Cross</th> <th>Back-45</th> </tr> </thead> <tbody> <tr><td>0</td><td>1496</td><td>1496</td><td>1496</td><td>1496</td></tr> <tr><td>5</td><td>1491</td><td>1487</td><td>1485</td><td>1487</td></tr> <tr><td>15</td><td>1443</td><td>1439</td><td>1441</td><td>1439</td></tr> <tr><td>25</td><td>1332</td><td>1338</td><td>1323</td><td>1338</td></tr> <tr><td>35</td><td>1158</td><td>1151</td><td>1132</td><td>1151</td></tr> <tr><td>45</td><td>933</td><td>926</td><td>1000</td><td>926</td></tr> <tr><td>55</td><td>688</td><td>819</td><td>854</td><td>819</td></tr> <tr><td>65</td><td>444</td><td>611</td><td>566</td><td>611</td></tr> <tr><td>75</td><td>231</td><td>300</td><td>324</td><td>300</td></tr> <tr><td>85</td><td>58</td><td>110</td><td>118</td><td>110</td></tr> <tr><td>95</td><td>23</td><td>43</td><td>35</td><td>43</td></tr> <tr><td>105</td><td>20</td><td>36</td><td>25</td><td>36</td></tr> <tr><td>115</td><td>12</td><td>34</td><td>24</td><td>34</td></tr> <tr><td>125</td><td>5</td><td>24</td><td>24</td><td>24</td></tr> <tr><td>135</td><td>3</td><td>12</td><td>21</td><td>12</td></tr> <tr><td>145</td><td>2</td><td>4</td><td>11</td><td>4</td></tr> <tr><td>155</td><td>1</td><td>1</td><td>3</td><td>1</td></tr> <tr><td>165</td><td>1</td><td>1</td><td>1</td><td>1</td></tr> <tr><td>175</td><td>1</td><td>1</td><td>1</td><td>1</td></tr> </tbody> </table>					Angle	End	45	Cross	Back-45	0	1496	1496	1496	1496	5	1491	1487	1485	1487	15	1443	1439	1441	1439	25	1332	1338	1323	1338	35	1158	1151	1132	1151	45	933	926	1000	926	55	688	819	854	819	65	444	611	566	611	75	231	300	324	300	85	58	110	118	110	95	23	43	35	43	105	20	36	25	36	115	12	34	24	34	125	5	24	24	24	135	3	12	21	12	145	2	4	11	4	155	1	1	3	1	165	1	1	1	1	175	1	1	1	1	Coefficients of Utilization EFFECTIVE FLOOR CAVITY REFLECTANCE 20 PER (pfc=0.20) <table border="1"> <thead> <tr> <th rowspan="2">pcc</th> <th colspan="3">80</th> <th colspan="3">70</th> <th colspan="2">50</th> </tr> <tr> <th>70</th> <th>50</th> <th>30</th> <th>70</th> <th>50</th> <th>30</th> <th>50</th> <th>30</th> </tr> </thead> <tbody> <tr><td>pw</td><td></td><td></td><td></td><td></td><td></td><td></td><td></td><td></td></tr> <tr><td>RCR</td><td></td><td></td><td></td><td></td><td></td><td></td><td></td><td></td></tr> <tr><td>0</td><td>117</td><td>117</td><td>117</td><td>114</td><td>114</td><td>114</td><td>109</td><td>109</td></tr> <tr><td>1</td><td>108</td><td>103</td><td>97</td><td>104</td><td>100</td><td>95</td><td>94</td><td>92</td></tr> <tr><td>2</td><td>97</td><td>89</td><td>81</td><td>94</td><td>86</td><td>80</td><td>82</td><td>77</td></tr> <tr><td>3</td><td>89</td><td>78</td><td>69</td><td>85</td><td>76</td><td>68</td><td>72</td><td>66</td></tr> <tr><td>4</td><td>81</td><td>68</td><td>59</td><td>79</td><td>67</td><td>58</td><td>65</td><td>56</td></tr> <tr><td>5</td><td>75</td><td>61</td><td>53</td><td>71</td><td>59</td><td>52</td><td>57</td><td>50</td></tr> <tr><td>6</td><td>68</td><td>55</td><td>46</td><td>67</td><td>54</td><td>46</td><td>52</td><td>45</td></tr> <tr><td>7</td><td>64</td><td>50</td><td>40</td><td>61</td><td>48</td><td>40</td><td>46</td><td>40</td></tr> <tr><td>8</td><td>58</td><td>46</td><td>36</td><td>57</td><td>45</td><td>36</td><td>42</td><td>35</td></tr> <tr><td>9</td><td>56</td><td>41</td><td>34</td><td>54</td><td>40</td><td>33</td><td>40</td><td>33</td></tr> <tr><td>10</td><td>52</td><td>39</td><td>30</td><td>51</td><td>38</td><td>30</td><td>36</td><td>29</td></tr> </tbody> </table>								pcc	80			70			50		70	50	30	70	50	30	50	30	pw									RCR									0	117	117	117	114	114	114	109	109	1	108	103	97	104	100	95	94	92	2	97	89	81	94	86	80	82	77	3	89	78	69	85	76	68	72	66	4	81	68	59	79	67	58	65	56	5	75	61	53	71	59	52	57	50	6	68	55	46	67	54	46	52	45	7	64	50	40	61	48	40	46	40	8	58	46	36	57	45	36	42	35	9	56	41	34	54	40	33	40	33	10	52	39	30	51	38	30	36	29
	Angle	End	45	Cross	Back-45																																																																																																																																																																																																																																																		
0	1496	1496	1496	1496																																																																																																																																																																																																																																																			
5	1491	1487	1485	1487																																																																																																																																																																																																																																																			
15	1443	1439	1441	1439																																																																																																																																																																																																																																																			
25	1332	1338	1323	1338																																																																																																																																																																																																																																																			
35	1158	1151	1132	1151																																																																																																																																																																																																																																																			
45	933	926	1000	926																																																																																																																																																																																																																																																			
55	688	819	854	819																																																																																																																																																																																																																																																			
65	444	611	566	611																																																																																																																																																																																																																																																			
75	231	300	324	300																																																																																																																																																																																																																																																			
85	58	110	118	110																																																																																																																																																																																																																																																			
95	23	43	35	43																																																																																																																																																																																																																																																			
105	20	36	25	36																																																																																																																																																																																																																																																			
115	12	34	24	34																																																																																																																																																																																																																																																			
125	5	24	24	24																																																																																																																																																																																																																																																			
135	3	12	21	12																																																																																																																																																																																																																																																			
145	2	4	11	4																																																																																																																																																																																																																																																			
155	1	1	3	1																																																																																																																																																																																																																																																			
165	1	1	1	1																																																																																																																																																																																																																																																			
175	1	1	1	1																																																																																																																																																																																																																																																			
pcc	80			70			50																																																																																																																																																																																																																																																
	70	50	30	70	50	30	50	30																																																																																																																																																																																																																																															
pw																																																																																																																																																																																																																																																							
RCR																																																																																																																																																																																																																																																							
0	117	117	117	114	114	114	109	109																																																																																																																																																																																																																																															
1	108	103	97	104	100	95	94	92																																																																																																																																																																																																																																															
2	97	89	81	94	86	80	82	77																																																																																																																																																																																																																																															
3	89	78	69	85	76	68	72	66																																																																																																																																																																																																																																															
4	81	68	59	79	67	58	65	56																																																																																																																																																																																																																																															
5	75	61	53	71	59	52	57	50																																																																																																																																																																																																																																															
6	68	55	46	67	54	46	52	45																																																																																																																																																																																																																																															
7	64	50	40	61	48	40	46	40																																																																																																																																																																																																																																															
8	58	46	36	57	45	36	42	35																																																																																																																																																																																																																																															
9	56	41	34	54	40	33	40	33																																																																																																																																																																																																																																															
10	52	39	30	51	38	30	36	29																																																																																																																																																																																																																																															
Comparative yearly lighting energy cost per 1000 lumens – \$2.07 based on 3000 hrs. and \$.08 pwr KWH. Photometric values based upon tests performed in compliance with LM-79.						Light Distribution <table border="1"> <thead> <tr> <th>Degrees</th> <th>Lumens</th> <th>% Luminaire</th> </tr> </thead> <tbody> <tr><td>0-30</td><td>1161</td><td>26.1</td></tr> <tr><td>0-40</td><td>1880</td><td>42.3</td></tr> <tr><td>0-60</td><td>3318</td><td>74.7</td></tr> <tr><td>0-90</td><td>4313</td><td>97.1</td></tr> <tr><td>90-120</td><td>99</td><td>2.2</td></tr> <tr><td>90-130</td><td>116</td><td>2.6</td></tr> <tr><td>90-150</td><td>128</td><td>2.9</td></tr> <tr><td>90-180</td><td>129</td><td>2.9</td></tr> <tr><td>0-180</td><td>4442</td><td>100.0</td></tr> </tbody> </table>				Degrees	Lumens	% Luminaire	0-30	1161	26.1	0-40	1880	42.3	0-60	3318	74.7	0-90	4313	97.1	90-120	99	2.2	90-130	116	2.6	90-150	128	2.9	90-180	129	2.9	0-180	4442	100.0	Average Luminance <table border="1"> <thead> <tr> <th>Angle</th> <th>End</th> <th>45°</th> <th>Cross</th> </tr> </thead> <tbody> <tr><td>45</td><td>6078</td><td>5034</td><td>5182</td></tr> <tr><td>55</td><td>5434</td><td>5059</td><td>4955</td></tr> <tr><td>65</td><td>4626</td><td>4531</td><td>3867</td></tr> <tr><td>75</td><td>3704</td><td>2883</td><td>2786</td></tr> <tr><td>85</td><td>2173</td><td>1578</td><td>1433</td></tr> </tbody> </table>				Angle	End	45°	Cross	45	6078	5034	5182	55	5434	5059	4955	65	4626	4531	3867	75	3704	2883	2786	85	2173	1578	1433																																																																																																																																																																																				
Degrees	Lumens	% Luminaire																																																																																																																																																																																																																																																					
0-30	1161	26.1																																																																																																																																																																																																																																																					
0-40	1880	42.3																																																																																																																																																																																																																																																					
0-60	3318	74.7																																																																																																																																																																																																																																																					
0-90	4313	97.1																																																																																																																																																																																																																																																					
90-120	99	2.2																																																																																																																																																																																																																																																					
90-130	116	2.6																																																																																																																																																																																																																																																					
90-150	128	2.9																																																																																																																																																																																																																																																					
90-180	129	2.9																																																																																																																																																																																																																																																					
0-180	4442	100.0																																																																																																																																																																																																																																																					
Angle	End	45°	Cross																																																																																																																																																																																																																																																				
45	6078	5034	5182																																																																																																																																																																																																																																																				
55	5434	5059	4955																																																																																																																																																																																																																																																				
65	4626	4531	3867																																																																																																																																																																																																																																																				
75	3704	2883	2786																																																																																																																																																																																																																																																				
85	2173	1578	1433																																																																																																																																																																																																																																																				

V2 Vaporlume LED sealed industrial

4', 3500 to 7000 lumens

4' Vaporlume LED V2, 5100 nominal lumens LER-111

Catalog No. V2WAE51L840-4 Test No. 32640 S/MH 1.2 Source LED Input Watts 46 Delivered Lumens 5129	Candlepower <table border="1"> <thead> <tr> <th>Angle</th> <th>End</th> <th>45</th> <th>Cross</th> <th>Back-45</th> </tr> </thead> <tbody> <tr><td>0</td><td>1729</td><td>1729</td><td>1729</td><td>1729</td></tr> <tr><td>5</td><td>1722</td><td>1716</td><td>1709</td><td>1716</td></tr> <tr><td>15</td><td>1666</td><td>1651</td><td>1632</td><td>1651</td></tr> <tr><td>25</td><td>1542</td><td>1523</td><td>1494</td><td>1523</td></tr> <tr><td>35</td><td>1340</td><td>1307</td><td>1250</td><td>1307</td></tr> <tr><td>45</td><td>1091</td><td>1039</td><td>1117</td><td>1039</td></tr> <tr><td>55</td><td>817</td><td>909</td><td>884</td><td>909</td></tr> <tr><td>65</td><td>533</td><td>670</td><td>574</td><td>670</td></tr> <tr><td>75</td><td>280</td><td>309</td><td>286</td><td>309</td></tr> <tr><td>85</td><td>75</td><td>107</td><td>86</td><td>107</td></tr> <tr><td>95</td><td>26</td><td>47</td><td>34</td><td>47</td></tr> <tr><td>105</td><td>24</td><td>42</td><td>30</td><td>42</td></tr> <tr><td>115</td><td>14</td><td>39</td><td>29</td><td>39</td></tr> <tr><td>125</td><td>6</td><td>28</td><td>28</td><td>28</td></tr> <tr><td>135</td><td>4</td><td>16</td><td>24</td><td>16</td></tr> <tr><td>145</td><td>3</td><td>5</td><td>12</td><td>5</td></tr> <tr><td>155</td><td>2</td><td>2</td><td>3</td><td>2</td></tr> <tr><td>165</td><td>2</td><td>2</td><td>2</td><td>2</td></tr> <tr><td>175</td><td>2</td><td>2</td><td>2</td><td>2</td></tr> </tbody> </table>					Angle	End	45	Cross	Back-45	0	1729	1729	1729	1729	5	1722	1716	1709	1716	15	1666	1651	1632	1651	25	1542	1523	1494	1523	35	1340	1307	1250	1307	45	1091	1039	1117	1039	55	817	909	884	909	65	533	670	574	670	75	280	309	286	309	85	75	107	86	107	95	26	47	34	47	105	24	42	30	42	115	14	39	29	39	125	6	28	28	28	135	4	16	24	16	145	3	5	12	5	155	2	2	3	2	165	2	2	2	2	175	2	2	2	2	Coefficients of Utilization EFFECTIVE FLOOR CAVITY REFLECTANCE 20 PER (pfc=0.20) <table border="1"> <thead> <tr> <th rowspan="2">pcc</th> <th colspan="3">80</th> <th colspan="3">70</th> <th colspan="3">50</th> </tr> <tr> <th>70</th> <th>50</th> <th>30</th> <th>70</th> <th>50</th> <th>30</th> <th>50</th> <th>30</th> </tr> </thead> <tbody> <tr><td>pw</td><td></td><td></td><td></td><td></td><td></td><td></td><td></td><td></td></tr> <tr><td>RCR</td><td></td><td></td><td></td><td></td><td></td><td></td><td></td><td></td></tr> <tr><td>0</td><td>117</td><td>117</td><td>117</td><td>114</td><td>114</td><td>114</td><td>110</td><td>110</td></tr> <tr><td>1</td><td>108</td><td>103</td><td>97</td><td>104</td><td>100</td><td>95</td><td>94</td><td>92</td></tr> <tr><td>2</td><td>97</td><td>89</td><td>81</td><td>94</td><td>86</td><td>80</td><td>82</td><td>77</td></tr> <tr><td>3</td><td>89</td><td>78</td><td>69</td><td>85</td><td>76</td><td>68</td><td>72</td><td>66</td></tr> <tr><td>4</td><td>81</td><td>68</td><td>59</td><td>79</td><td>68</td><td>58</td><td>65</td><td>56</td></tr> <tr><td>5</td><td>75</td><td>61</td><td>53</td><td>71</td><td>59</td><td>52</td><td>57</td><td>50</td></tr> <tr><td>6</td><td>68</td><td>55</td><td>46</td><td>67</td><td>54</td><td>46</td><td>52</td><td>45</td></tr> <tr><td>7</td><td>64</td><td>50</td><td>40</td><td>61</td><td>48</td><td>40</td><td>46</td><td>40</td></tr> <tr><td>8</td><td>58</td><td>46</td><td>36</td><td>57</td><td>45</td><td>36</td><td>42</td><td>35</td></tr> <tr><td>9</td><td>56</td><td>41</td><td>34</td><td>54</td><td>40</td><td>33</td><td>40</td><td>33</td></tr> <tr><td>10</td><td>52</td><td>39</td><td>30</td><td>51</td><td>38</td><td>30</td><td>36</td><td>29</td></tr> </tbody> </table>					pcc	80			70			50			70	50	30	70	50	30	50	30	pw									RCR									0	117	117	117	114	114	114	110	110	1	108	103	97	104	100	95	94	92	2	97	89	81	94	86	80	82	77	3	89	78	69	85	76	68	72	66	4	81	68	59	79	68	58	65	56	5	75	61	53	71	59	52	57	50	6	68	55	46	67	54	46	52	45	7	64	50	40	61	48	40	46	40	8	58	46	36	57	45	36	42	35	9	56	41	34	54	40	33	40	33	10	52	39	30	51	38	30	36	29
	Angle	End	45	Cross	Back-45																																																																																																																																																																																																																																																
0	1729	1729	1729	1729																																																																																																																																																																																																																																																	
5	1722	1716	1709	1716																																																																																																																																																																																																																																																	
15	1666	1651	1632	1651																																																																																																																																																																																																																																																	
25	1542	1523	1494	1523																																																																																																																																																																																																																																																	
35	1340	1307	1250	1307																																																																																																																																																																																																																																																	
45	1091	1039	1117	1039																																																																																																																																																																																																																																																	
55	817	909	884	909																																																																																																																																																																																																																																																	
65	533	670	574	670																																																																																																																																																																																																																																																	
75	280	309	286	309																																																																																																																																																																																																																																																	
85	75	107	86	107																																																																																																																																																																																																																																																	
95	26	47	34	47																																																																																																																																																																																																																																																	
105	24	42	30	42																																																																																																																																																																																																																																																	
115	14	39	29	39																																																																																																																																																																																																																																																	
125	6	28	28	28																																																																																																																																																																																																																																																	
135	4	16	24	16																																																																																																																																																																																																																																																	
145	3	5	12	5																																																																																																																																																																																																																																																	
155	2	2	3	2																																																																																																																																																																																																																																																	
165	2	2	2	2																																																																																																																																																																																																																																																	
175	2	2	2	2																																																																																																																																																																																																																																																	
pcc	80			70			50																																																																																																																																																																																																																																														
	70	50	30	70	50	30	50	30																																																																																																																																																																																																																																													
pw																																																																																																																																																																																																																																																					
RCR																																																																																																																																																																																																																																																					
0	117	117	117	114	114	114	110	110																																																																																																																																																																																																																																													
1	108	103	97	104	100	95	94	92																																																																																																																																																																																																																																													
2	97	89	81	94	86	80	82	77																																																																																																																																																																																																																																													
3	89	78	69	85	76	68	72	66																																																																																																																																																																																																																																													
4	81	68	59	79	68	58	65	56																																																																																																																																																																																																																																													
5	75	61	53	71	59	52	57	50																																																																																																																																																																																																																																													
6	68	55	46	67	54	46	52	45																																																																																																																																																																																																																																													
7	64	50	40	61	48	40	46	40																																																																																																																																																																																																																																													
8	58	46	36	57	45	36	42	35																																																																																																																																																																																																																																													
9	56	41	34	54	40	33	40	33																																																																																																																																																																																																																																													
10	52	39	30	51	38	30	36	29																																																																																																																																																																																																																																													
Comparative yearly lighting energy cost per 1000 lumens – \$2.16 based on 3000 hrs. and \$.08 pwr KWH. Photometric values based upon tests performed in compliance with LM-79.	Light Distribution <table border="1"> <thead> <tr> <th>Degrees</th> <th>Lumens</th> <th>% Luminaire</th> </tr> </thead> <tbody> <tr><td>0-30</td><td>1344</td><td>26.1</td></tr> <tr><td>0-40</td><td>2176</td><td>42.3</td></tr> <tr><td>0-60</td><td>3842</td><td>74.7</td></tr> <tr><td>0-90</td><td>4992</td><td>97.1</td></tr> <tr><td>90-120</td><td>114</td><td>2.2</td></tr> <tr><td>90-130</td><td>133</td><td>2.6</td></tr> <tr><td>90-150</td><td>148</td><td>2.9</td></tr> <tr><td>90-180</td><td>149</td><td>2.9</td></tr> <tr><td>0-180</td><td>5141</td><td>100.0</td></tr> </tbody> </table>					Degrees	Lumens	% Luminaire	0-30	1344	26.1	0-40	2176	42.3	0-60	3842	74.7	0-90	4992	97.1	90-120	114	2.2	90-130	133	2.6	90-150	148	2.9	90-180	149	2.9	0-180	5141	100.0	Average Luminance <table border="1"> <thead> <tr> <th>Angle</th> <th>End</th> <th>45°</th> <th>Cross</th> </tr> </thead> <tbody> <tr><td>45</td><td>7103</td><td>5648</td><td>5790</td></tr> <tr><td>55</td><td>6447</td><td>5616</td><td>5126</td></tr> <tr><td>65</td><td>5552</td><td>4964</td><td>3915</td></tr> <tr><td>75</td><td>4486</td><td>2974</td><td>2465</td></tr> <tr><td>85</td><td>2784</td><td>1530</td><td>1043</td></tr> </tbody> </table>					Angle	End	45°	Cross	45	7103	5648	5790	55	6447	5616	5126	65	5552	4964	3915	75	4486	2974	2465	85	2784	1530	1043																																																																																																																																																																																					
Degrees	Lumens	% Luminaire																																																																																																																																																																																																																																																			
0-30	1344	26.1																																																																																																																																																																																																																																																			
0-40	2176	42.3																																																																																																																																																																																																																																																			
0-60	3842	74.7																																																																																																																																																																																																																																																			
0-90	4992	97.1																																																																																																																																																																																																																																																			
90-120	114	2.2																																																																																																																																																																																																																																																			
90-130	133	2.6																																																																																																																																																																																																																																																			
90-150	148	2.9																																																																																																																																																																																																																																																			
90-180	149	2.9																																																																																																																																																																																																																																																			
0-180	5141	100.0																																																																																																																																																																																																																																																			
Angle	End	45°	Cross																																																																																																																																																																																																																																																		
45	7103	5648	5790																																																																																																																																																																																																																																																		
55	6447	5616	5126																																																																																																																																																																																																																																																		
65	5552	4964	3915																																																																																																																																																																																																																																																		
75	4486	2974	2465																																																																																																																																																																																																																																																		
85	2784	1530	1043																																																																																																																																																																																																																																																		

4' Vaporlume LED V2, 7000 nominal lumens LER-107

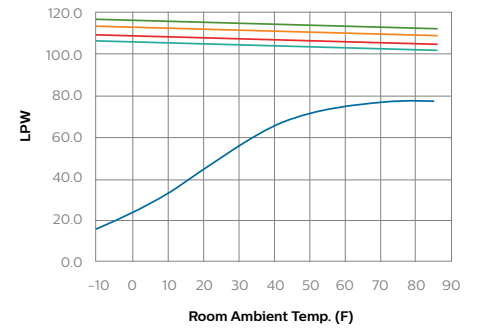
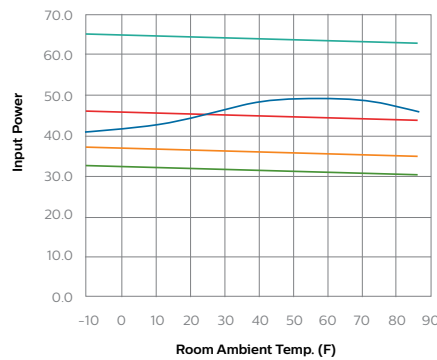
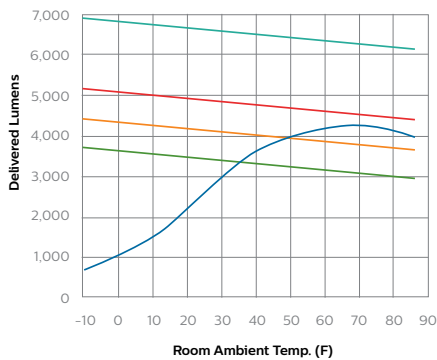
Catalog No. V2WAE70L840-4 Test No. 32614 S/MH 1.2 Source LED Input Watts 65 Delivered Lumens 6985	Candlepower <table border="1"> <thead> <tr> <th>Angle</th> <th>End</th> <th>45</th> <th>Cross</th> <th>Back-45</th> </tr> </thead> <tbody> <tr><td>0</td><td>2357</td><td>2357</td><td>2357</td><td>2357</td></tr> <tr><td>5</td><td>2351</td><td>2342</td><td>2345</td><td>2342</td></tr> <tr><td>15</td><td>2274</td><td>2271</td><td>2270</td><td>2271</td></tr> <tr><td>25</td><td>2101</td><td>2105</td><td>2089</td><td>2105</td></tr> <tr><td>35</td><td>1818</td><td>1814</td><td>1784</td><td>1814</td></tr> <tr><td>45</td><td>1467</td><td>1462</td><td>1586</td><td>1462</td></tr> <tr><td>55</td><td>1085</td><td>1302</td><td>1345</td><td>1302</td></tr> <tr><td>65</td><td>701</td><td>959</td><td>891</td><td>959</td></tr> <tr><td>75</td><td>365</td><td>469</td><td>503</td><td>469</td></tr> <tr><td>85</td><td>92</td><td>170</td><td>176</td><td>170</td></tr> <tr><td>95</td><td>36</td><td>67</td><td>53</td><td>67</td></tr> <tr><td>105</td><td>33</td><td>57</td><td>39</td><td>57</td></tr> <tr><td>115</td><td>19</td><td>53</td><td>39</td><td>53</td></tr> <tr><td>125</td><td>8</td><td>38</td><td>38</td><td>38</td></tr> <tr><td>135</td><td>4</td><td>20</td><td>33</td><td>20</td></tr> <tr><td>145</td><td>3</td><td>6</td><td>18</td><td>6</td></tr> <tr><td>155</td><td>2</td><td>2</td><td>4</td><td>2</td></tr> <tr><td>165</td><td>2</td><td>2</td><td>2</td><td>2</td></tr> <tr><td>175</td><td>2</td><td>2</td><td>2</td><td>2</td></tr> </tbody> </table>					Angle	End	45	Cross	Back-45	0	2357	2357	2357	2357	5	2351	2342	2345	2342	15	2274	2271	2270	2271	25	2101	2105	2089	2105	35	1818	1814	1784	1814	45	1467	1462	1586	1462	55	1085	1302	1345	1302	65	701	959	891	959	75	365	469	503	469	85	92	170	176	170	95	36	67	53	67	105	33	57	39	57	115	19	53	39	53	125	8	38	38	38	135	4	20	33	20	145	3	6	18	6	155	2	2	4	2	165	2	2	2	2	175	2	2	2	2	Coefficients of Utilization EFFECTIVE FLOOR CAVITY REFLECTANCE 20 PER (pfc=0.20) <table border="1"> <thead> <tr> <th rowspan="2">pcc</th> <th colspan="3">80</th> <th colspan="3">70</th> <th colspan="3">50</th> </tr> <tr> <th>70</th> <th>50</th> <th>30</th> <th>70</th> <th>50</th> <th>30</th> <th>50</th> <th>30</th> </tr> </thead> <tbody> <tr><td>pw</td><td></td><td></td><td></td><td></td><td></td><td></td><td></td><td></td></tr> <tr><td>RCR</td><td></td><td></td><td></td><td></td><td></td><td></td><td></td><td></td></tr> <tr><td>0</td><td>117</td><td>117</td><td>117</td><td>114</td><td>114</td><td>114</td><td>109</td><td>109</td></tr> <tr><td>1</td><td>108</td><td>103</td><td>97</td><td>105</td><td>100</td><td>95</td><td>94</td><td>92</td></tr> <tr><td>2</td><td>97</td><td>89</td><td>81</td><td>94</td><td>86</td><td>80</td><td>82</td><td>77</td></tr> <tr><td>3</td><td>89</td><td>78</td><td>69</td><td>85</td><td>76</td><td>68</td><td>72</td><td>66</td></tr> <tr><td>4</td><td>81</td><td>68</td><td>59</td><td>79</td><td>67</td><td>58</td><td>65</td><td>56</td></tr> <tr><td>5</td><td>75</td><td>61</td><td>52</td><td>71</td><td>59</td><td>52</td><td>57</td><td>50</td></tr> <tr><td>6</td><td>68</td><td>55</td><td>46</td><td>67</td><td>54</td><td>46</td><td>52</td><td>45</td></tr> <tr><td>7</td><td>64</td><td>50</td><td>40</td><td>61</td><td>48</td><td>40</td><td>46</td><td>40</td></tr> <tr><td>8</td><td>58</td><td>46</td><td>36</td><td>57</td><td>45</td><td>36</td><td>42</td><td>35</td></tr> <tr><td>9</td><td>56</td><td>41</td><td>34</td><td>54</td><td>40</td><td>33</td><td>40</td><td>33</td></tr> <tr><td>10</td><td>52</td><td>39</td><td>30</td><td>51</td><td>38</td><td>30</td><td>36</td><td>29</td></tr> </tbody> </table>					pcc	80			70			50			70	50	30	70	50	30	50	30	pw									RCR									0	117	117	117	114	114	114	109	109	1	108	103	97	105	100	95	94	92	2	97	89	81	94	86	80	82	77	3	89	78	69	85	76	68	72	66	4	81	68	59	79	67	58	65	56	5	75	61	52	71	59	52	57	50	6	68	55	46	67	54	46	52	45	7	64	50	40	61	48	40	46	40	8	58	46	36	57	45	36	42	35	9	56	41	34	54	40	33	40	33	10	52	39	30	51	38	30	36	29
	Angle	End	45	Cross	Back-45																																																																																																																																																																																																																																																
0	2357	2357	2357	2357																																																																																																																																																																																																																																																	
5	2351	2342	2345	2342																																																																																																																																																																																																																																																	
15	2274	2271	2270	2271																																																																																																																																																																																																																																																	
25	2101	2105	2089	2105																																																																																																																																																																																																																																																	
35	1818	1814	1784	1814																																																																																																																																																																																																																																																	
45	1467	1462	1586	1462																																																																																																																																																																																																																																																	
55	1085	1302	1345	1302																																																																																																																																																																																																																																																	
65	701	959	891	959																																																																																																																																																																																																																																																	
75	365	469	503	469																																																																																																																																																																																																																																																	
85	92	170	176	170																																																																																																																																																																																																																																																	
95	36	67	53	67																																																																																																																																																																																																																																																	
105	33	57	39	57																																																																																																																																																																																																																																																	
115	19	53	39	53																																																																																																																																																																																																																																																	
125	8	38	38	38																																																																																																																																																																																																																																																	
135	4	20	33	20																																																																																																																																																																																																																																																	
145	3	6	18	6																																																																																																																																																																																																																																																	
155	2	2	4	2																																																																																																																																																																																																																																																	
165	2	2	2	2																																																																																																																																																																																																																																																	
175	2	2	2	2																																																																																																																																																																																																																																																	
pcc	80			70			50																																																																																																																																																																																																																																														
	70	50	30	70	50	30	50	30																																																																																																																																																																																																																																													
pw																																																																																																																																																																																																																																																					
RCR																																																																																																																																																																																																																																																					
0	117	117	117	114	114	114	109	109																																																																																																																																																																																																																																													
1	108	103	97	105	100	95	94	92																																																																																																																																																																																																																																													
2	97	89	81	94	86	80	82	77																																																																																																																																																																																																																																													
3	89	78	69	85	76	68	72	66																																																																																																																																																																																																																																													
4	81	68	59	79	67	58	65	56																																																																																																																																																																																																																																													
5	75	61	52	71	59	52	57	50																																																																																																																																																																																																																																													
6	68	55	46	67	54	46	52	45																																																																																																																																																																																																																																													
7	64	50	40	61	48	40	46	40																																																																																																																																																																																																																																													
8	58	46	36	57	45	36	42	35																																																																																																																																																																																																																																													
9	56	41	34	54	40	33	40	33																																																																																																																																																																																																																																													
10	52	39	30	51	38	30	36	29																																																																																																																																																																																																																																													
Comparative yearly lighting energy cost per 1000 lumens – \$2.24 based on 3000 hrs. and \$.08 pwr KWH. Photometric values based upon tests performed in compliance with LM-79.	Light Distribution <table border="1"> <thead> <tr> <th>Degrees</th> <th>Lumens</th> <th>% Luminaire</th> </tr> </thead> <tbody> <tr><td>0-30</td><td>1830</td><td>26.1</td></tr> <tr><td>0-40</td><td>2961</td><td>42.3</td></tr> <tr><td>0-60</td><td>5230</td><td>74.7</td></tr> <tr><td>0-90</td><td>6798</td><td>97.1</td></tr> <tr><td>90-120</td><td>156</td><td>2.2</td></tr> <tr><td>90-130</td><td>183</td><td>2.6</td></tr> <tr><td>90-150</td><td>203</td><td>2.9</td></tr> <tr><td>90-180</td><td>205</td><td>2.9</td></tr> <tr><td>0-180</td><td>7003</td><td>100.0</td></tr> </tbody> </table>					Degrees	Lumens	% Luminaire	0-30	1830	26.1	0-40	2961	42.3	0-60	5230	74.7	0-90	6798	97.1	90-120	156	2.2	90-130	183	2.6	90-150	203	2.9	90-180	205	2.9	0-180	7003	100.0	Average Luminance <table border="1"> <thead> <tr> <th>Angle</th> <th>End</th> <th>45°</th> <th>Cross</th> </tr> </thead> <tbody> <tr><td>45</td><td>9554</td><td>7946</td><td>8219</td></tr> <tr><td>55</td><td>8566</td><td>8043</td><td>7802</td></tr> <tr><td>65</td><td>7304</td><td>7108</td><td>6080</td></tr> <tr><td>75</td><td>5848</td><td>4516</td><td>4329</td></tr> <tr><td>85</td><td>3444</td><td>2433</td><td>2142</td></tr> </tbody> </table>					Angle	End	45°	Cross	45	9554	7946	8219	55	8566	8043	7802	65	7304	7108	6080	75	5848	4516	4329	85	3444	2433	2142																																																																																																																																																																																					
Degrees	Lumens	% Luminaire																																																																																																																																																																																																																																																			
0-30	1830	26.1																																																																																																																																																																																																																																																			
0-40	2961	42.3																																																																																																																																																																																																																																																			
0-60	5230	74.7																																																																																																																																																																																																																																																			
0-90	6798	97.1																																																																																																																																																																																																																																																			
90-120	156	2.2																																																																																																																																																																																																																																																			
90-130	183	2.6																																																																																																																																																																																																																																																			
90-150	203	2.9																																																																																																																																																																																																																																																			
90-180	205	2.9																																																																																																																																																																																																																																																			
0-180	7003	100.0																																																																																																																																																																																																																																																			
Angle	End	45°	Cross																																																																																																																																																																																																																																																		
45	9554	7946	8219																																																																																																																																																																																																																																																		
55	8566	8043	7802																																																																																																																																																																																																																																																		
65	7304	7108	6080																																																																																																																																																																																																																																																		
75	5848	4516	4329																																																																																																																																																																																																																																																		
85	3444	2433	2142																																																																																																																																																																																																																																																		

V2 Vaporlume LED sealed industrial

4', 3500 to 7000 lumens

Energy Data

Model	Initial Delivered Lumens @ 25°C Ambient	Input Power	Lumens per Watt	Application notes
V2WAE35L840-4-UNV	3,699	32W	117 LPW	<ul style="list-style-type: none"> Slightly less than 2 lamp F32T8 at room temperature, 35% energy savings. Equivalent to 2 lamp F32T8 in refrigerator (40°F), 35% energy savings.
V2WAE43L840-4-UNV	4,431	38W	116 LPW	<ul style="list-style-type: none"> Equivalent to 2 lamp F32T8 at room temperature, 15% energy savings. Double the output of 2 lamp F32T8 in freezer (25°F) at the SAME energy use.
V2WAE51L840-4-UNV	5,129	46W	111 LPW	<ul style="list-style-type: none"> Equivalent to high ballast factor 2 lamp F32T8 at room temperature, 15% energy savings.
V2WAE70L840-4-UNV	6,985	65W	107 LPW	<ul style="list-style-type: none"> Equivalent to 3 lamp F32T8 at room temperature, 30% energy savings.



— 2-LAMP F32T8 — V2WAE35L840 — V2WAE43L840
 — V2WAE51L840 — V2WAE70L840

— 2-LAMP F32T8 — V2WAE35L840 — V2WAE43L840
 — V2WAE51L840 — V2WAE70L840

— 2-LAMP F32T8 — DWAE35L840 — DWAE43L840
 — DWAE51L840 — DWAE70L840

