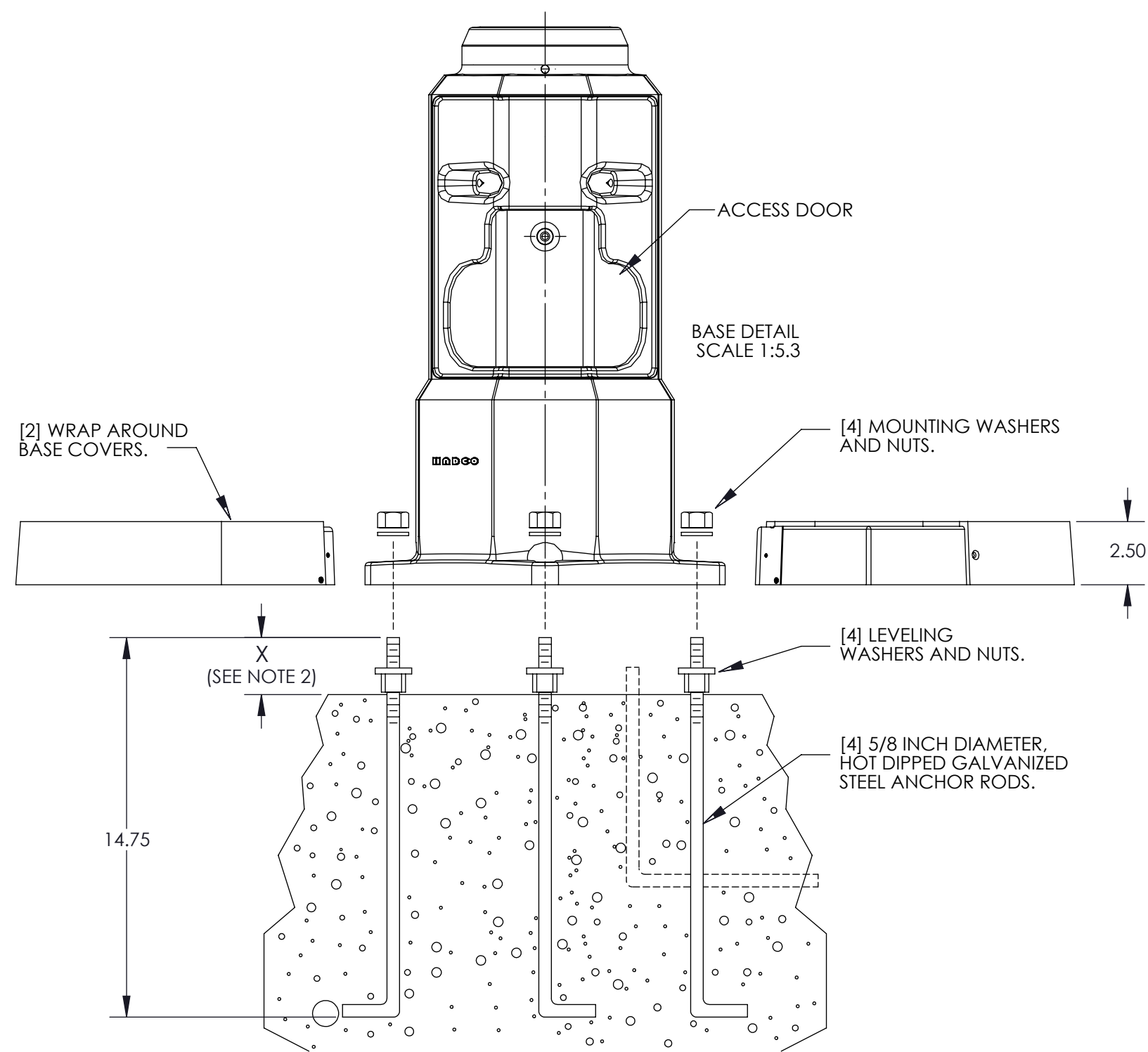


TOP SECTIONED VIEW



NOTES:

- 1 SUGGESTED BOLT CIRCLE; 12 INCH DIAMETER  
MAXIMUM BOLT CIRCLE; 12 3/4 INCH DIAMETER  
MINIMUM BOLT CIRCLE; 11 3/8 INCH DIAMETER
- 2 HADCO STRONGLY RECOMMENDS USING LEVELING NUTS TO MOUNT THE POST BASE. IF FOUNDATION IS NOT LEVEL, INCREASE "X" DIMENSION ACCORDINGLY WHEN USING LEVELING NUTS WITH WASHERS.  
  
X = 2 5/8" INCHES WITH LEVELING NUTS.  
WITH USE OF LEVELING NUTS, GAP BETWEEN BASE COVER AND CONCRETE COULD BE UP TO 5/8".  
X = 2" INCHES WITHOUT LEVELING NUTS.
- 3 IF USING GROUTING TO CONCEAL GAP BETWEEN BASE AND FOUNDATION, ALLOW FOR WATER DRAINAGE.
- 4 BASE COVER DIMENSIONS:  
2 3/8 INCH HIGH [INTERNALLY].  
11 3/4 INCH SQUARE.  
16 5/8 INCH ACROSS CORNERS.

<b>HADCO</b> by <b>ignify</b>	CONFIDENTIAL: This drawing is confidential and proprietary to Signify Holdings and may not be reproduced in whole or in part without the express written consent of Signify Holdings. © 2018 Signify Holdings. All rights reserved.		TITLE: TEMP_AR_P1700 SERIES,NEW
	DRAWN BY: J. WOJTKOWIAK CHECKED BY: B. DORON APPR BY: M. S. PRESSEL	DATE: 9/23/02 DATE: 8/4/09 DATE: 10/2/02	DRW SIZE: D
* DO NOT SCALE THIS DRAWING * EF-04-01-11 Rev.09 SCALE 1:1 SHEET 1 OF 1 PART NO: 101000552			