

**BASIC LYTESPAN® VARIABLE ANGLE CONNECTOR (PRE-WIRED)
FOR USE WITH BASIC LYTESPAN® TRACK SYSTEM ONLY**

INSTRUCTION SHEET NO.

IS:6068

READ AND UNDERSTAND THESE INSTRUCTIONS BEFORE PROCEEDING.

This fixture is intended for installation in accordance with the National Electrical Code and local regulations. To assure full compliance with local codes and regulation, check with your local electrical inspector before installation. To prevent electrical shock, turn off electricity at fuse box before proceeding.

Retain these instructions for maintenance reference.

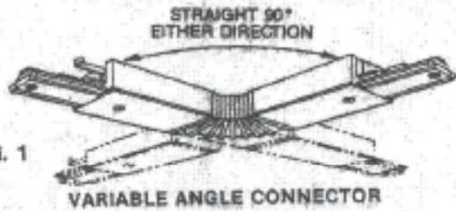


FIG. 1

The VARIABLE ANGLE CONNECTOR can flex 90° in either direction from a straight position and is pre-wired for power continuity. It can be used with Surface Mounted or Stem Mounted Track. Power can be fed into the VARIABLE ANGLE CONNECTOR, See instruction B.

CAUTION:

- **TURN OFF POWER AT FUSE BOX BEFORE INSTALLING TRACK.**
- **INSTRUCTIONS FOR GROUNDING PER INSTRUCTION SHEET OF THE FEED-IN KIT MUST BE FOLLOWED. FAILURE TO DO SO MAY RESULT IN A HAZARDOUS CONDITION.**
- **USE ONLY #12 GA. SOLID WIRE IN CONNECTORS TO MAINTAIN PROPER RATING OF TRACK.**
- **OBSERVE POLARITY, WHITE (NEUTRAL) WIRE MUST BE CONNECTED TO TERMINAL MARKED "NEUT." FAILURE TO OBSERVE POLARITY MAY RESULT IN POTENTIAL ELECTRICAL HAZARD.**

A. INSTALLATION AND POWER CONTINUITY

1. To maintain polarity in pre-wired VARIABLE ANGLE CONNECTOR, orient TRACK UNITS so that the BEAD is opposite the POLARITY KEY (Fig. 2).
2. Remove LIVE END (loosen screw), DEAD END COVER or COUPLER (loosen screw) from ends of TRACK UNITS to be attached to VARIABLE ANGLE CONNECTOR.
3. Insert VARIABLE ANGLE CONNECTOR into TRACK UNITS, tighten LOCKING SCREWS.

B. POWER FEED TO VARIABLE ANGLE CONNECTORS

Power can be fed directly into the VARIABLE ANGLE CONNECTOR from conduit or cable terminating in a 1/4-14 I.P.S. threaded male connector (see Section E of Instruction Sheet IS:6020). Follow the instructions for power feed to LIVE END in the instruction sheet supplied with:
 END FEED CANOPY MOUNTING KIT.
 FLOATING CANOPY MOUNTING KIT.
 GRID CEILING CANOPY KIT.
 STEM MOUNTING KITS.
 FLOATING INVISIBLE FEED MOUNTING KIT.
 FLOATING CANOPY KIT WITH STAND OFF CLIPS.

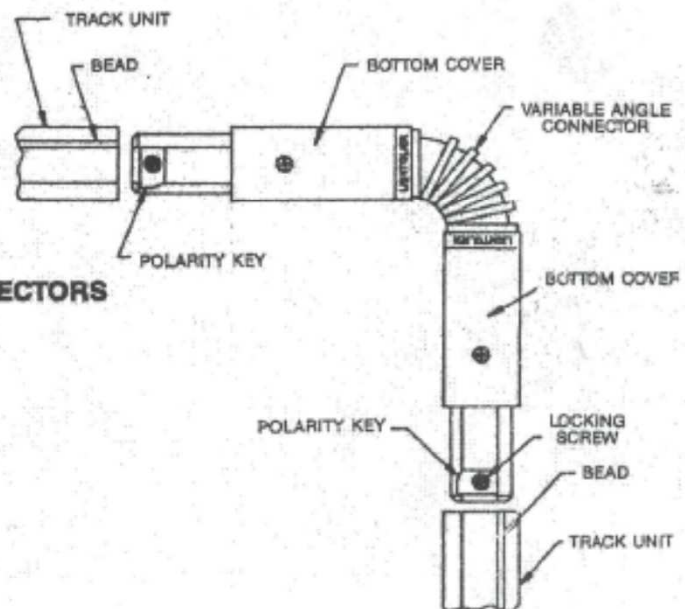
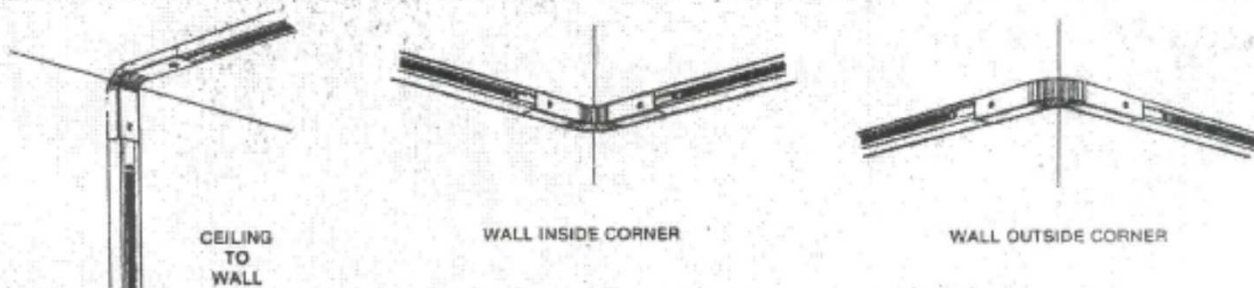


FIG. 2

C. OTHER APPLICATIONS FOR VARIABLE ANGLE CONNECTOR



Signify North America Corporation
200 Franklin Square Drive
Somerset, NJ 08873, USA
Phone: 855-486-2216

Signify Canada Ltd./ Signify Canada Ltée
281 Hillmount Road
Markham ON, Canada L6C 2S3
Phone: 800-668-9008

LIGHTOLIER

by @ignify

www.lightolier.com