

Lightolier's ModuLyte Cylinder series offers a commercial-grade aesthetic with standard flexibility for either surface or suspended mounting. Designed for use with standard ModuLyte Downlight light engines, the cylinders range extends ModuLyte's field versatility to below ceiling applications. A seamless blend of functionality, aesthetics, and flexibility make ModuLyte an easy choice.



ModuLyte  
Cylinder



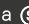
ModuLyte  
Downlight

**Peace-of-mind with ModuLyte during design, installation, and maintenance**

- **Selectable CCTs:**  
2700K / 3000K / 3500K / 4000K / 5000K
- **Selectable lumens:**  
Output ranging from 500lm to 5000lm\*
- **Selectable switches:**  
Conveniently toggle switches to make lumen and color temperature adjustments, resulting in the right light for each environment
- **Same look, different types**  
ModuLyte Cylinders may be field or factory installed with standard ModuLyte Downlight light engines

\*ModuLyte cylinders up to 3000lm

**GENLYTE  
SOLUTIONS**

a  signify business

© 2024 Signify Holding. All rights reserved. The information provided herein is subject to change, without notice. Signify does not give any representation or warranty as to the accuracy or completeness of the information included herein and shall not be liable for any action in reliance thereon. The information presented in this document is not intended as any commercial offer and does not form part of any quotation or contract, unless otherwise agreed by Signify.

All trademarks are owned by Signify Holding or their respective owners.

PLI-2405PM 12/24

www.lightolier.com

Signify North America Corp.  
400 Crossing Blvd, Suite 600  
Bridgewater, NJ 08807  
Telephone: 800-555-0050

Signify Canada Ltd.  
281 Hillmount Road,  
Markham, ON, Canada L6C 2S3  
Telephone: 800-668-9008

**LIGHTOLIER**

Downlighting

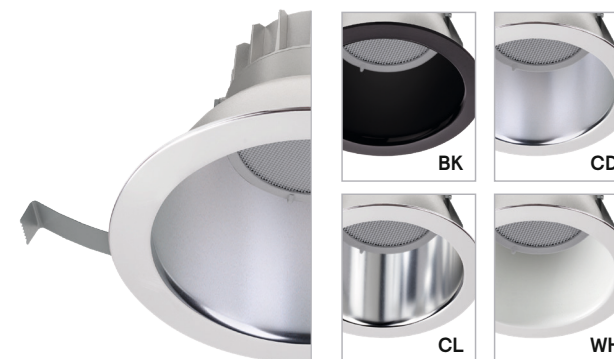
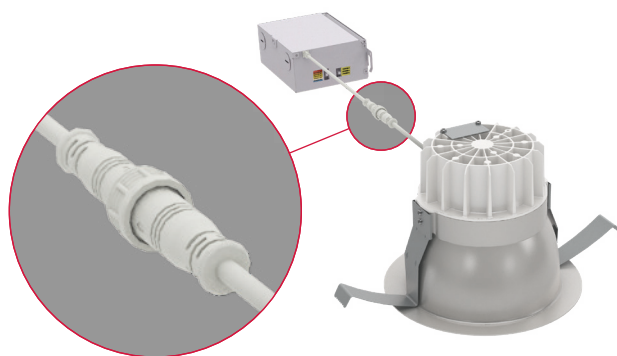
ModuLyte

Cylinders



**Flexibility at  
your fingertips**





## Stress less about deadlines thanks to ModuLyte's contractor-friendly install

- **Quick connect:**  
Low voltage plenum-rated cable screws together with twist-lock to attach driver to light engine
- **Retention spring:**  
Easy installation and maintenance
- **Easy access:**  
To driver after installation

## Be equipped with commercial-grade options on day one for renovation, retrofit, and new construction

- **Apertures:**  
Round 4", & 6", Round 8" (downlight only)
- **Frames:**  
Frame is optional for downlights.
- **Optics:**  
Interchangeable beams and wall wash
- **Mounting**  
Surface or suspended mounting plates included with cylinder, suspended requires cable or pendant stem accessory

## Providing core commercial performance, aesthetics and flexibility needed on commercial projects

- **Aperture:**  
4" & 6" apertures: Great for open ceiling and surface mount application needs  
8" Downlight: Retrofit-friendly solution
- **Beams:**  
Wide and Medium, Asymmetric Wall Wash
- **Finishes:**  
Specular Clear, Comfort Clear Diffuse, White, Black
- **Cylinder Finishes:**  
White, Black
- **Reflector Flanges:**  
White, Black, Polished (matches aperture)