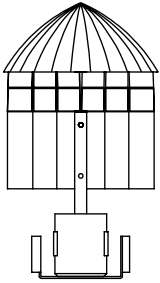


## INSTALLATION INSTRUCTIONS: CLIP-ON REFLECTOR ASSEMBLIES

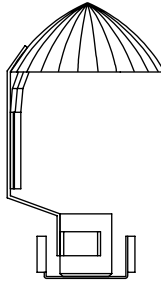
Mogul

FRONT



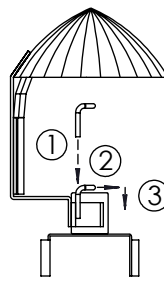
F-Reflector (70000204)

SIDE



Medium

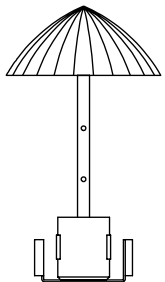
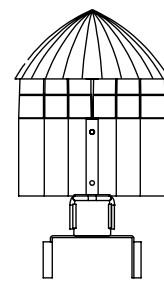
SIDE



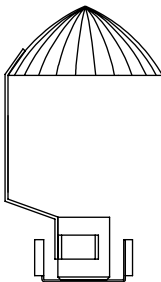
F-Reflector (70000213)

Install bracket  
(included) as  
shown on ALL  
medium sockets.

FRONT

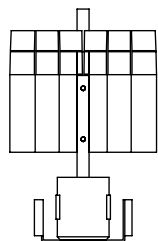


D-Reflector (70000209)

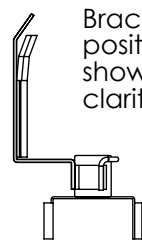
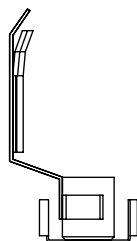


D-Reflector (70000218)

Bracket's final  
position (only  
shown here for  
clarity's sake).

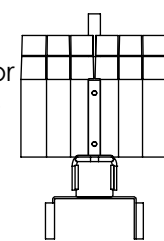


H-Reflector (70000205)



H-Reflector (70000138)

Bracket's final  
position (only  
shown here for  
clarity's sake).



READ THESE INSTRUCTIONS  
CAREFULLY BEFORE INSTALLING  
THIS ASSEMBLY.

These clip-on reflector assemblies are intended for field installation. Hadco strongly recommends you disconnect power from the luminaire prior to installing the reflector assembly to avoid bodily harm from the lit lamp. These instructions do not purport to cover all details or variations in equipment or installation. If specific problems occur, contact Hadco for assistance. Retain these instructions for future reference.

1. Install bracket over assembly's clip as shown until it is just above the top of the socket.
2. Slide bracket toward front of assembly's clip until it "clicks" in to place.
3. Push bracket down until it stops.



This fixture is intended for installation in accordance with the National Electrical Code and local code specifications. Failure to adhere to these codes and instructions may result in serious injury and/or damage to the ballast and void the warranty. These instructions do not purport to cover all details or variations in equipment, nor to provide for every possible contingency related to installation, operation, maintenance, or mounting situation. Should specific problems occur that are not addressed by these instructions, contact your Sales Representative or distributor for assistance. Retain these instructions for future reference.