

# LEDALITE - SHINE

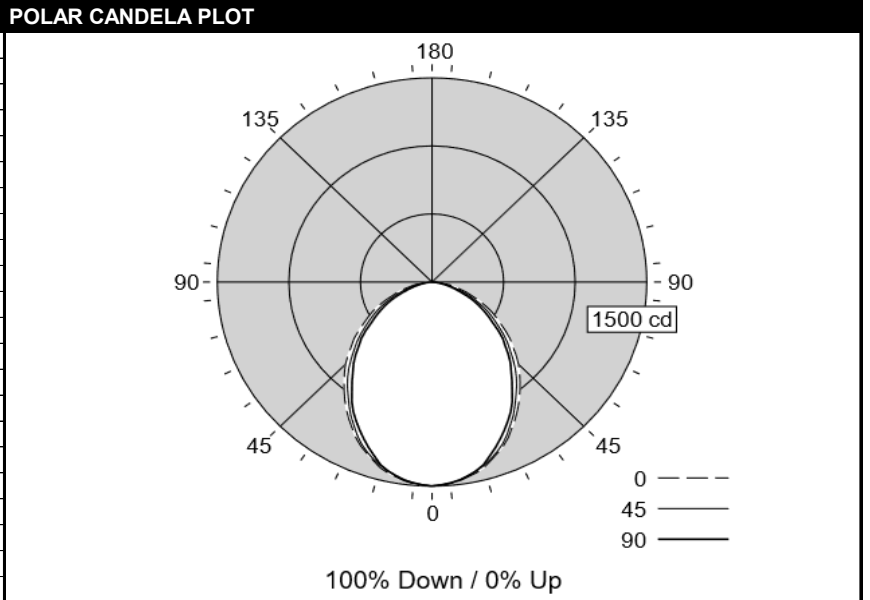


by @ignify

**TEST DATE:** 22 Sep 2021 **CATALOG NO:** 3314xxSTL94035A1DE

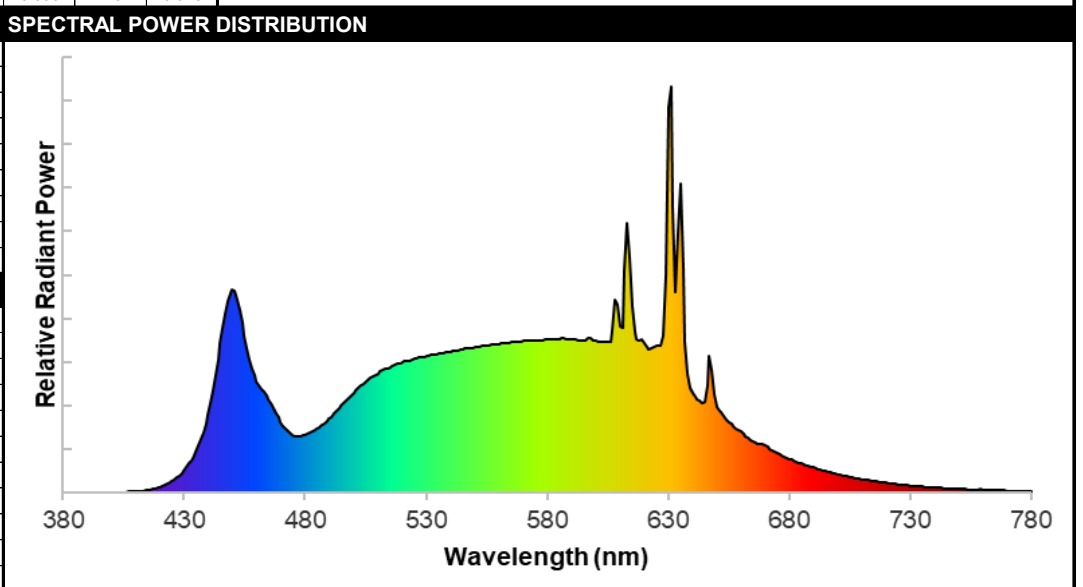
<b>Lamp Type:</b>	LED	<b>Description:</b>	3500LM 1x4 940
<b>No. of Lamps:</b>	88		
<b>Rated Lamp Lumens:</b>	-1	<b>Flux (lm), Efficiency (%):</b>	3491 lm 100%
<b>Input Watts:</b>	120 VAC 32.1	<b>Up/Dn Ratio, Efficacy (lm/W):</b>	100% Down / 0% Up 108.8
<b>CIE-IES Classification:</b>	Direct	<b>Report:</b>	LNG02621

CANDELA DISTRIBUTION						
	Flux					
	0	22.5	45	67.5	90	Lumens
0	1499	1499	1499	1499	1499	
5	1487	1489	1482	1485	1482	141
15	1411	1413	1395	1408	1390	395
25	1261	1276	1239	1234	1198	572
35	1062	1087	1022	1010	976	648
45	855	864	799	777	755	626
55	629	627	568	551	515	521
65	411	405	360	333	316	363
75	206	206	157	146	131	183
85	45	48	27	29	23	43
90	0	0	0	0	0	
95	0	0	0	0	0	0
105	0	0	0	0	0	0
115	0	0	0	0	0	0
125	0	0	0	0	0	0
135	0	0	0	0	0	0
145	0	0	0	0	0	0
155	0	0	0	0	0	0
165	0	0	0	0	0	0
175	0	0	0	0	0	0
180	0	0	0	0	0	0



CHARACTERISTICS				COEFFICIENTS OF UTILIZATION (%)												
RP1	None			Pc---	80				70			50			0	
Direct: Peak Candela & Angle (0°)	1498.9	0.0		Pw---	70	50	30	10	70	50	30	50	30	10	0	
Direct: Peak Candela & Angle (90°)	1498.9	0.0		RCR												
Spacing Criteria (0°, 90°, 180°)	1.16	1.11	N/A	0	119	119	119	119	116	116	116	111	111	111	100	
Beam (H, V), Field (H, V)	90.2	99.3	147.9	157.0	1	110	105	101	98	107	103	99	99	96	93	85
Indirect: Peak Candela & Angle(°)	N/A	N/A	2	100	93	86	81	98	91	85	87	82	78	72		
Indirect: Zenith Candela, Peak to Zenith	N/A	N/A	3	92	82	74	68	89	80	73	77	71	66	62		
Luminous Width, Length, Height (ft)	0.91	3.90	0.00	4	84	73	65	58	82	72	64	69	62	57	53	
DLC, UGR (4H x 8H, 1.0H), MDER	N/A	20.0	0.649	5	78	66	57	51	76	64	56	62	55	50	47	
x, y, CCT, D <sub>uv</sub>	0.3824	0.3798	3969	0.0008	6	72	59	51	45	70	58	50	57	49	44	41
CRI (R <sub>a</sub> ), R <sub>g</sub> , G <sub>a</sub> , C <sub>g</sub>	93	64	99	93	7	67	54	46	40	65	53	45	52	44	39	37
TM-30-18 R <sub>f</sub> , R <sub>h1</sub> , R <sub>g</sub> , R <sub>mh1</sub>	91	91	100	-5%	8	63	49	41	36	61	49	41	47	40	35	33
120V: P(W), I(A), THD(%), PF	32.1	0.269	8.1	0.995	9	59	46	38	32	57	45	37	44	37	32	30
277V: P(W), I(A), THD(%), PF	32.1	0.120	13.3	0.962	10	55	42	34	29	54	42	34	41	34	29	27
347V: P(W), I(A), THD(%), PF	31.2	0.093	7.3	0.973	*Based on a floor reflectance of 0.2											

ZONAL LUMENS (lm)			
Zone	Lumens	%Fixture	%Lamp
0-30	1107	31.7%	31.7%
0-40	1755	50.3%	50.3%
0-60	2902	83.1%	83.1%
0-90	3491	100.0%	100.0%
90-130	0	0.0%	0.0%
90-150	0	0.0%	0.0%
90-180	0	0.0%	0.0%
0-180	3491	100.0%	100.0%

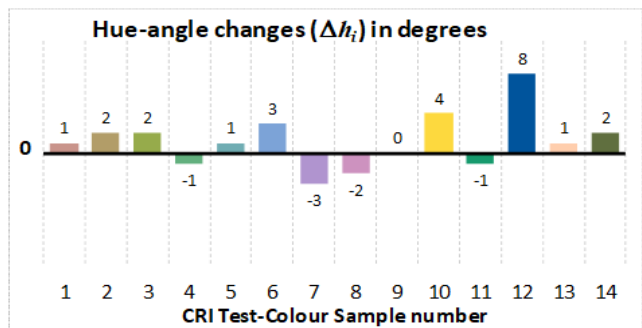
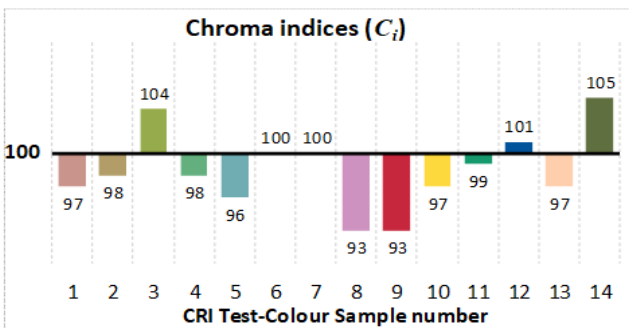
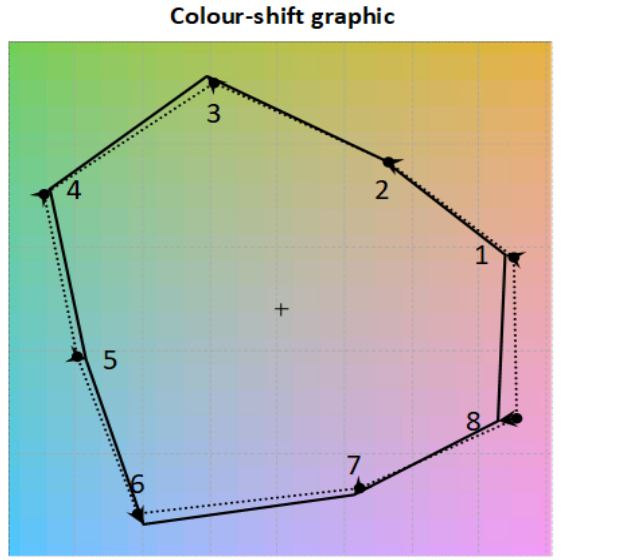
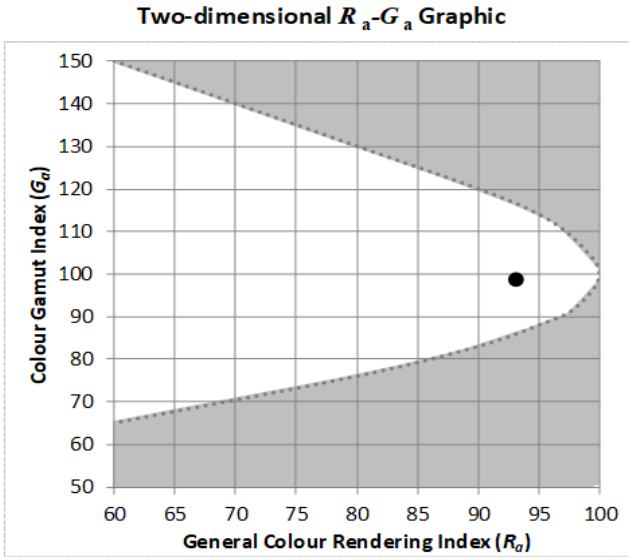
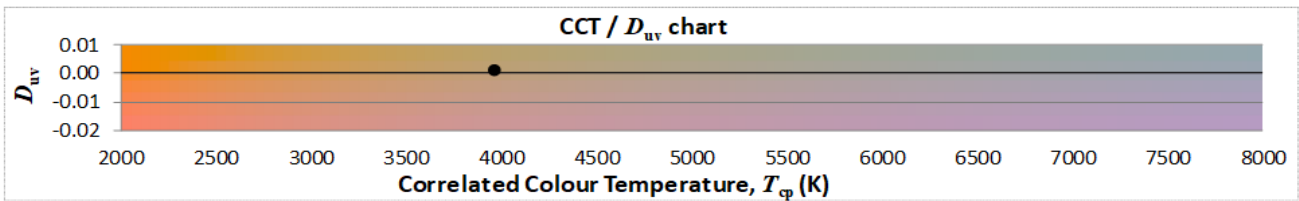
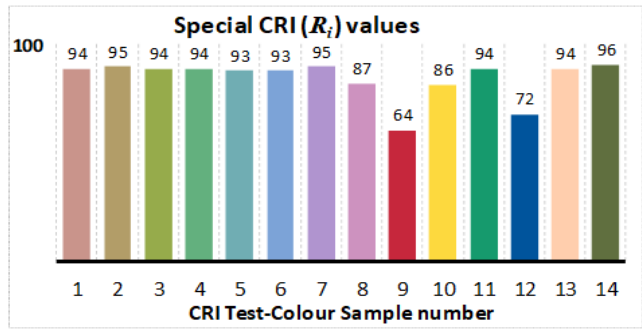
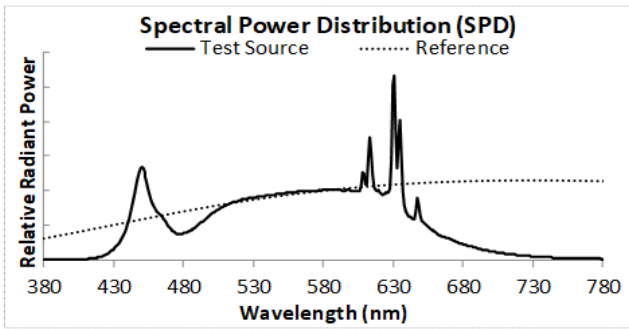


AVG LUMINANCE (cd/m <sup>2</sup> )			
	0	45	90
0	4544	4544	4544
5	4526	4510	4511
15	4427	4378	4364
25	4218	4144	4008
35	3929	3781	3611
45	3666	3426	3237
55	3323	3000	2720
65	2948	2580	2264
75	2415	1839	1529
85	1569	936	800

# Output of GLA Calculation Tool for CIE 13.3 CRI and Associated CRI-based Colour Rendition Properties

<b>Test Number:</b>	T20201108	<b>Manufacturer:</b>	Ledalite by Signify
<b>Date:</b>	27 Aug 2020	<b>Model:</b>	Shine

<b>Correlated Colour Temperature (<math>T_{cp}</math>) in K</b>	3969	<b>CIE1931 chromaticity coordinate, x</b>	0.3824
<b>Distance to Blackbody Locus (<math>D_{uv}</math>)</b>	0.0008	<b>CIE1931 chromaticity coordinate, y</b>	0.3798
<b>General Colour Rendering Index (<math>R_a</math>)</b>	93	<b>CIE1976 chromaticity coordinate, <math>u'</math></b>	0.2252
<b>Red Rendering Index (<math>R_9</math>)</b>	64	<b>CIE1976 chromaticity coordinate, <math>v'</math></b>	0.5032
<b>Colour Gamut Index (<math>G_a</math>)</b>	99		
<b>Red Chroma Index (<math>C_9</math>)</b>	93		



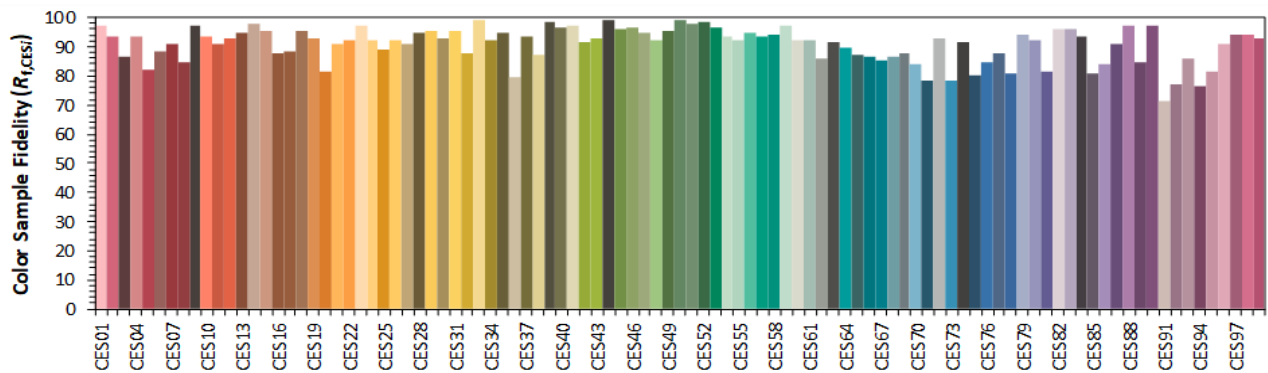
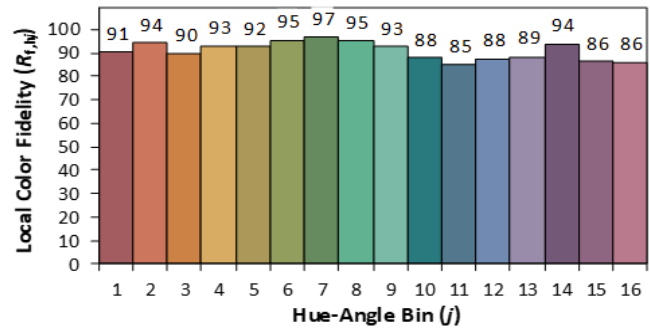
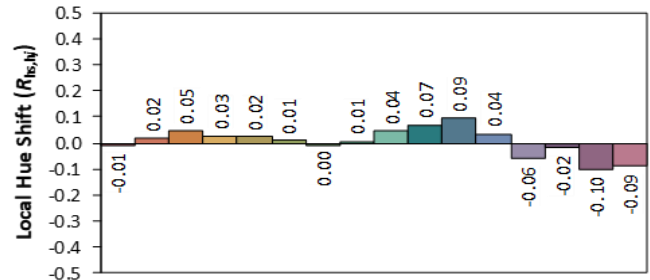
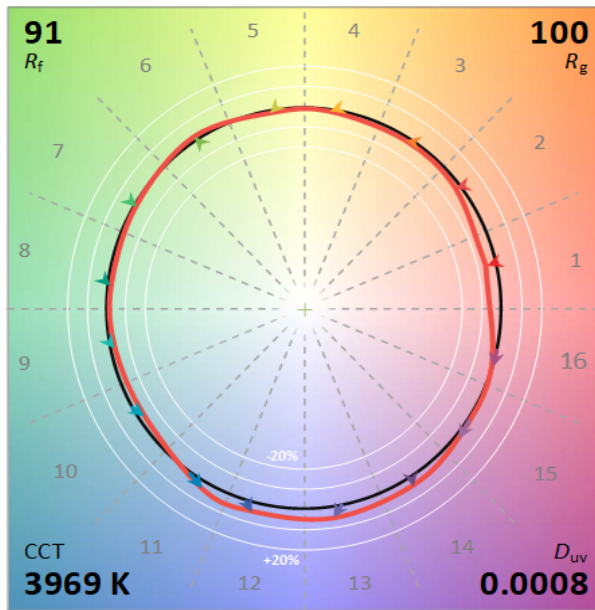
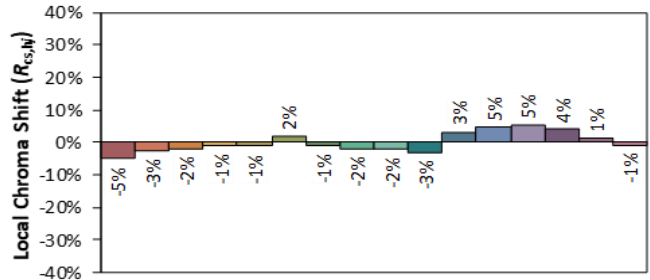
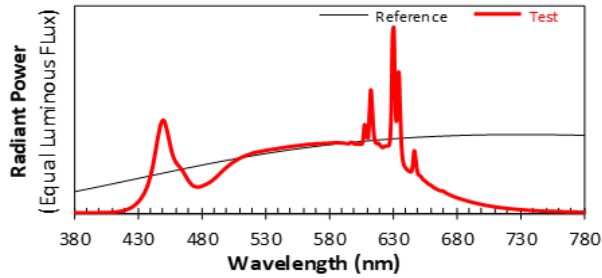
# ANSI/IES TM-30-18 Color Rendition Report

Source: T20201108

Manufacturer: Ledalite by Signify

Date: 27 Aug 2020

Model: Shine



Notes: This is a recommended method for displaying ANSI/IES TM-30-18 information.

x 0.3824

y 0.3798

u' 0.2252

v' 0.5032

