

Day-Brite



by Signify

Recessed

EvoGrid 1x4

1EVG up to 6000 lumens



Day-Brite / CFI EvoGrid recessed utilizes highly reliable and efficient Philips LED platform boards and dimmable driver enabling market leading performance in its category. Its soft opal diffuser with large luminous area minimizes apparent brightness compared to other basket luminaires and provides general lighting perfect for a wide variety of applications.

Project: _____
 Location: _____
 Cat.No: _____
 Type: _____
 Lamps: _____ Qty: _____
 Notes: _____

Ordering guide

example: 1EVG30L840-4-D-UNV-DIM

Width	Family	Ceiling Type	Lumens (nominal delivered)	Color	Length	Center Diffuser	Voltage	Driver	Options
1	EV	G		—	4	—	—	—	
1' 1"	EV EvoGrid	G Grid	30L 3000 38L 3800 45L 4500 54L 5400 60L 6000 Other lumen packages may be ordered in increments of 100lm from 3000 to 6000 lumens	830 80 CRI, 3000K 835 80 CRI, 3500K 840 80 CRI, 4000K 850 80 CRI, 5000K	4' 4"	D Diffuse (opal) DS Diffuse smooth (opal) R Diffuse round ribbed (opal)	UNV Universal Voltage, 120-277 volt 120¹ 120V 277¹ 277V 347 347V	DIM² Dimming SDIM Step dimming to 40% input power XDIM¹ MarkX phase dimming LDE Lutron LDE5, 5% dimming DALI DALI	F1 3/8" flex, 3 wire 18 gauge 6' F2 3/8" flex, 4 wire 18 gauge 6' F1/D 3/8" twin flex, 3 wire 18 gauge 6' for dimmable luminaires F2/5W 3/8" single flex, 5 wire 18 gauge 6' for dimmable luminaires F2/6W 3/8" single flex, 6 wire 18 gauge 6' for dimmable and emergency luminaires GLR Fusing, fast blow ER100^{7,8} UL924 listed sensor bypass relay, factory installed between driver & sensor GTD/E⁷ UL924 listed Bodine GTD factory installed on driver input GTD/SNSR^{7,8} UL924 listed Bodine GTD installed between driver & sensor DSC Quick driver disconnect EMLED³ Integral emergency battery pack, 1100lm nominal (ballast enclosure on top of luminaire) SWZCS^{4,5} Interact Pro scalable sensor with integral daylight & occupancy sensing, advanced grouping with dwell time SWZDT⁵ SpaceWise only sensor, daylighting and occupancy, advanced grouping with dwell time RADIO⁵ Interact Pro RF sensor, enables wireless connected lighting control IAOSB^{4,5} Interact Office advanced wireless sensor bundle, integral SC1500 w/loT capabilities for enterprise scale projects CHIC Chicago Plenum rated CRM⁶ Continuous row mount AG Antimicrobial finish BAC⁹ Meets the requirements of the Buy American Act of 1933 (BAA)

- XDIM requires 120V or 277V specification.
- Integral controls options dimmable to 5% via wireless all switch. Non-controls configurations are 0-10V dimmable to 1%.
- EMLED option overall luminaire height is 4-1/8".
- Must order IRT9015 Interact commissioning remote with each system order.
- Specify only with -DIM driver option.
- CRM includes side cover with top access plate and additional end cover. 7/8" gap between fixtures.
- Must be installed in conjunction with a UL1008 device.
- Must be ordered with an integral controls option.
- Failure to properly select the "BAC" suffix could result in you receiving product that is not BAA compliant product with no recourse for an RMA or refund. This BAC designation hereunder does not address (i) the applicability of, or availability of a waiver under, the Trade Agreements Act, or (ii) the "Buy America" domestic content requirements imposed on states, localities, and other non-federal entities as a condition of receiving funds administered by the Department of Transportation or other federal agencies.
- Consult Signify to confirm whether specific accessories are BAA-compliant.

Accessories¹⁰ (order separately)

- FMA14** – 1'x4" "F" mounting frame for NEMA "F" mounting
- EVD14L** – EvoGrid 1'x4" rectangular ribbed replacement lens
- EVDS14L** – EvoGrid 1'x4" rectangular smooth replacement lens
- EVR14L** – EvoGrid 1'x4" round ribbed replacement lens
- FSK14** – 1'x4" surface mount field installation kit (factory welded seams) order with -TAP (top access plate) option (EMLED option not available)
- FSF14** – 1'x4" surface mount field assembly kit, order with -TAP (top access plate) option (EMLED option not available)

SWZCS accessories¹⁰ (order separately)

- IRT9015** – handheld remote for grouping and configuration (at least one remote required for any SWZCS installation).

General Notes

- All options factory installed.
- All accessories are field installed.
- Many luminaire components, such as reflectors, refractors, lenses, sockets, lamp holders, and LEDs are made from various types of plastics which can be adversely affected by airborne contaminants. If sulfur based chemicals, petroleum based products, cleaning solutions, or other contaminants are expected in the intended area of use, consult factory for compatibility.



1EVG EvoGrid recessed 1x4

up to 6000 lumens

Ordering guide – PoE controls (Static & Tunable White)

example: 1EVG45L8TW-4-D-LV-POE-IAO

Width	Family	Ceiling Type	Lumens (nominal delivered)	Color	Length	Center Diffuser	Voltage	Driver	Options
<input type="text" value="1"/>	<input type="text" value="EV"/>	<input type="text" value="G"/>		–	<input type="text" value="4"/> –	–	<input type="text" value="LV"/> –	<input type="text" value="POE"/> –	
1 1'	EV EvoGrid	G Grid	30L 3000 38L 3800 45L 4500	<u>Static White</u> 830 80 CRI, 3000K 835 80 CRI, 3500K 840 80 CRI, 4000K 850 80 CRI, 5000K <u>Color Tuning</u> 8TW 80CRI, 2700K thru 6500K tunable white	4 4'	D Diffuse (opal) DS Diffuse smooth (opal) R Diffuse round ribbed (opal)	LV Low voltage	POE Power over ethernet	AG Antimicrobial finish EMPOE¹ 600lm integral emergency driver and battery pack IAO Integral Interact Office daylighting and occupancy sensor, enables wireless connected lighting control IAOSB Interact Office advanced wired sensor bundle, integral SC2000 w/ IoT capabilities for enterprise scale projects

1 Indicator light and test switch located on housing side panel..

Ordering guide – DALI Controls (Tunable White)

example: 1EVG45L8TW-4-D-UNV-DTW-IAO

Width	Family	Ceiling Type	Lumens (nominal delivered)	Color	Length	Center Diffuser	Voltage	Driver	Options
<input type="text" value="1"/>	<input type="text" value="EV"/>	<input type="text" value="G"/>		–	<input type="text" value="4"/> –	–	<input type="text" value="UNV"/> –	<input type="text" value="DTW"/> –	
1 1'	EV EvoGrid	G Grid	37L 3700 45L 4500 50L 5000	8TW 80CRI, 2700K thru 6500K tunable white	4 4'	D Diffuse (opal) DS Diffuse smooth (opal) R Diffuse round ribbed (opal)	UNV Universal Voltage, 120-277 volt	DTW Dual channel tunable white	AG Antimicrobial finish F1/D 3/8" twin flex, 3 wire 18 gauge 6' for dimmable luminaires F2/7W 3/8" single flex, 7 wire 18 gauge 6' for emergency EMLED Factory wired Bodine BSL310 integral emergency pack. Nominal 1100lm IAO Integral Interact Office daylighting and occupancy sensor, enables wireless connected lighting control IAOSB Interact Office advanced wired sensor bundle, integral SC2000 w/ IoT capabilities for enterprise scale projects GLR Fusing, fast blow DSC Quick driver disconnect

1EVG EvoGrid recessed 1x4

up to 6000 lumens

Application

- A highly efficient, visually comfortable, architecturally styled recessed LED luminaire designed with a minimalistic strategy to achieve sustainable objectives.
- Low profile standard configuration is only 2-7/8" deep requiring minimal plenum space. Integral emergency (EMLED) configuration is 4-1/8" deep.
- Soft opal diffuser with large luminous area minimizes apparent brightness and provides high visual comfort perfect for a wide variety of general lighting applications like offices, schools, retail, or healthcare.
- Multiple lumen packages over a wide range to provide significant application flexibility over light levels and/or luminaire spacing.
- Directs a controlled amount of light to the higher angles in the room to balance the brightness of the surfaces and eliminate "cave effect" while creating the impression of a larger, brighter space without glare.
- Excellent color rendering with a CRI of 80.
- LEDs are an excellent source for use with controls since dimming or frequent switching does not degrade the performance or life of the source. Integral or external sensors are available for use.
- Designed for use with standard Grid (NEMA "G") or Narrow Grid (NEMA "NFG") ceiling T-bars. Drywall or plaster requirements can be accommodated by using an FMA14 "F" mounting frame (sold separately.)
- Continuous row mount option (CRM) includes wireway covers on each end and on one side of housing.

Construction/Finish

- Uncomplicated design is 2-7/8" (standard configuration) in depth and only requires a few parts outside of the electrical system and hardware, creating several benefits:

- Less material required
- Less packaging required
- Reduced weight
- Less energy required for construction and assembly
- More luminaires can be shipped per truck to reduce fuel use and emissions
- Luminaire finish is matte white polyester for a high quality, durable finish.
- T-bar grid clips are integral to body.
- Access plate located on end provides easy field wiring. TAP option provides top mounted access plate.

Electrical

- Integral sensor options for occupancy sensing and/or daylight harvesting are available for additional energy savings with no reduction of life or increase in installation labor.
- Total luminaire efficacy as high as 135 LPW (lumens per Watt).
- LED board is easily accessible from below without tools. Single LED board is replaceable if needed via plug-in connectors to ensure long service life.
- LED driver is accessible from above.
- Emergency driver is accessible from above. To estimate lumen output in emergency mode, multiply emergency pack wattage by efficacy, then by 1.10. Typical lumen output is 1300lm for EMLED.
- The GTD/E option is used to bypass wall switches and allow luminaire operation on auxiliary power. Generator transfer requires installation in conjunction with a UL1008 listed device.
- The GTD/SNSR option is used to bypass integrated sensor control in the event of utility power loss. Generator transfer requires installation in conjunction with a UL1008 listed device.
- Step dimming default is 100/40%. Contact factory for additional low trim options.
- 5 year manufacturer's limited warranty. Visit signify.com/warranties for complete warranty information.

- TM-21 predicted L70 lumen maintenance up to 80,000 hours.
- cETLus listed to UL and CSA standards, suitable for damp locations.

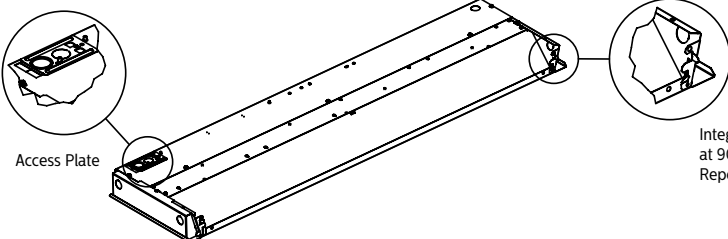
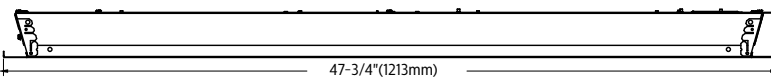
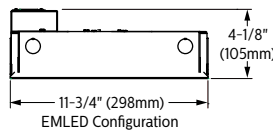
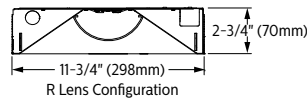
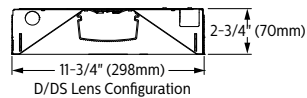
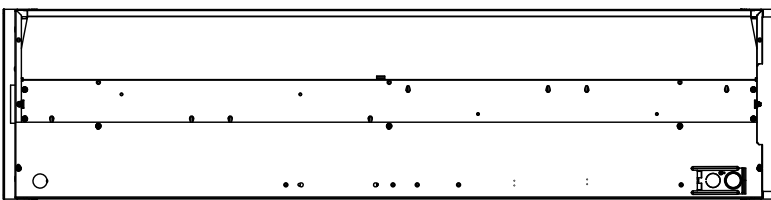
Enclosure

- Opal diffuser provides soft, comfortable lighting while maintaining high efficiency.
- Diffuser requires no frames or fasteners and can be easily removed from below without tools if needed.

Energy data

Luminaire	Catalog Number	Input Power	Efficacy
1x4	1EVG30L840-4-D	23	129
	1EVG38L840-4-D	29	128
	1EVG45L840-4-D	36	126
	1EVG30L840-4-R	23	135
	1EVG38L840-4-R	29	135
	1EVG45L840-4-R	34	134

Dimensions



Integral Grid Clips – Bend upper tab outward at 90°. Bend lower tab outward approx. 20°. Repeat for all four corners.

1EVG EvoGrid recessed 1x4

up to 6000 lumens

Wireless Controls Options

SpaceWise DT (SWZDT)

- Standalone daylight and occupancy sensing with advanced grouping, wireless mesh networking and dwell time.
- Commissioning via compatible Android phone and Philips Field App
- Dimming via compatible Zigbee wireless wall switch only (see link below for details)
- Register for the commissioning app at <http://registration.componentcloud.philips.com/appregistration/>
- Integral sensing options may not be combined
- For more information including recommended switches, refer to the following: –
SWZDT – www.usa.lighting.philips.com/systems/lighting-systems/spacewise

Emergency Options (ER100)

- Power Sensing (Factory default) – Recommended UL924 option requires unswitched power sense line, absence of voltage on the normal circuit triggers luminaire to 100% output
- Power Interruption Detection (Field option) – Detects AC power interruption >30ms triggers 90 minute emergency mode with luminaire at 100% output

Interact Pro scalable sensor for Foundation, Advanced & Enterprise tiers (SWZCS and an evolution of SpaceWise)

- SWZCS is a connected sensor with integral occupancy and daylight sensing and supports wireless mesh connectivity.
- The sensor works in the Foundation mode (similar to SpaceWise) when configured without a gateway or in an Interact Pro Advanced or Enterprise mode if a compatible gateway is used.
- Interact Pro includes an App, a portal and a broad portfolio of wireless luminaires, lamps and retrofit kits all working on the same system.
- Startup is implemented via Interact Pro App (Android or iPhone) & BlueTooth connectivity. The App provides flexibility to choose between a gateway or non gateway mode for setup.
- Setup with the gateway requires wired internet access to the gateway. It is possible to add a gateway at a later point.
- Prepare project configuration steps remotely and use IRT9015 remote onsite to identify and group devices together.
 - Compatible with:
 - SWS200 wireless scene switch
 - Battery powered IP42 presence sensor OCC sensor IA CM WH 10/1
 - Battery powered IP42 presence & daylight sensor OCC-DL sensor IA CM IP42 WH
 - LCN3110: Battery powered IP65 presence sensor, OCC sensor IA CM IP65WH
 - LCN3120: Battery powered IP65 presence & daylight sensor, OCC-DL sensor IA CM IP65 WH
- For more information on Interact Pro visit: www.interact-lighting.com/interactproscalablesystem

Radio only sensor (RADIO)

- Integral RADIO only sensor simply enables wireless mesh connectivity to the luminaire without any occupancy or daylight sensing.
- Ideal for applications where sensing functionality is managed by other Interact devices and the luminaire only needs to have wireless connectivity.

Interact Pro scalable sensor bundles for Enterprise tier

- IAOSB option in addition to occupancy and daylight sensing supports advanced IoT capabilities such as people estimation analysis, desk level temperature & humidity sensing, noise classification, and BLE beacon.
- Compatible with SWS200 wireless scene switch and Interact Ready wireless battery powered sensors.
- Use Interact software and insights to increase building efficiency, achieve building wide integration and optimize space through occupancy analytics.
- Requires compatible Gateway and internet connectivity for commissioning.
- For more information, visit: www.interact-lighting.com/office or www.usa.lighting.philips.com/systems/system-areas/offices

Wired Controls Options

Interact Office Wired (PoE), Static White & Tunable White

- PoE based IoT connected lighting solution for large enterprises that span across multiple floors, buildings and require multiple gateways.
- Use Interact Office software and insights to increase building efficiency, achieve building wide integration and optimize space through occupancy analytics.
- Human centric lighting through tunable white technology – Dynamic behaviors via scheduled lighting recipes mimicking daylight patterns or supporting biorhythms.
- IAOSB option in addition to occupancy and daylight sensing supports advanced IoT capabilities such as people estimation analysis, desk level temperature & humidity sensing, noise classification, and BLE beacon.
- PoE lighting controller is accessible from below.

- Integral sensor option for occupancy sensing (PIR) and/or daylight harvesting available for additional energy savings.
- Optional integral emergency controller and battery pack provides 600lm nominal output. Test switch and indicator light mounted on side of chassis on one end.
- Emergency battery has a 3 month pre-installed shelf life, and must be stored and installed in environments of 20C to 30C (-4F to 86F) ambient, and 45-85% relative humidity.
- For more information on Interact Office Wired, visit: www.interact-lighting.com/office or www.usa.lighting.philips.com/systems/system-areas/offices

Tunable White with DALI

- Signify tunable white solutions are designed to help maximize the influence of lighting on your daily life.
- Dynamic behaviors via scheduled lighting recipes mimicking daylight patterns or supporting biorhythms.
- Scene setting via lighting pre-sets based on various combinations of lighting color temperature and intensity.

www.usa.lighting.philips.com/products/product-highlights/tunable-white-technology

1EVG EvoGrid recessed 1x4

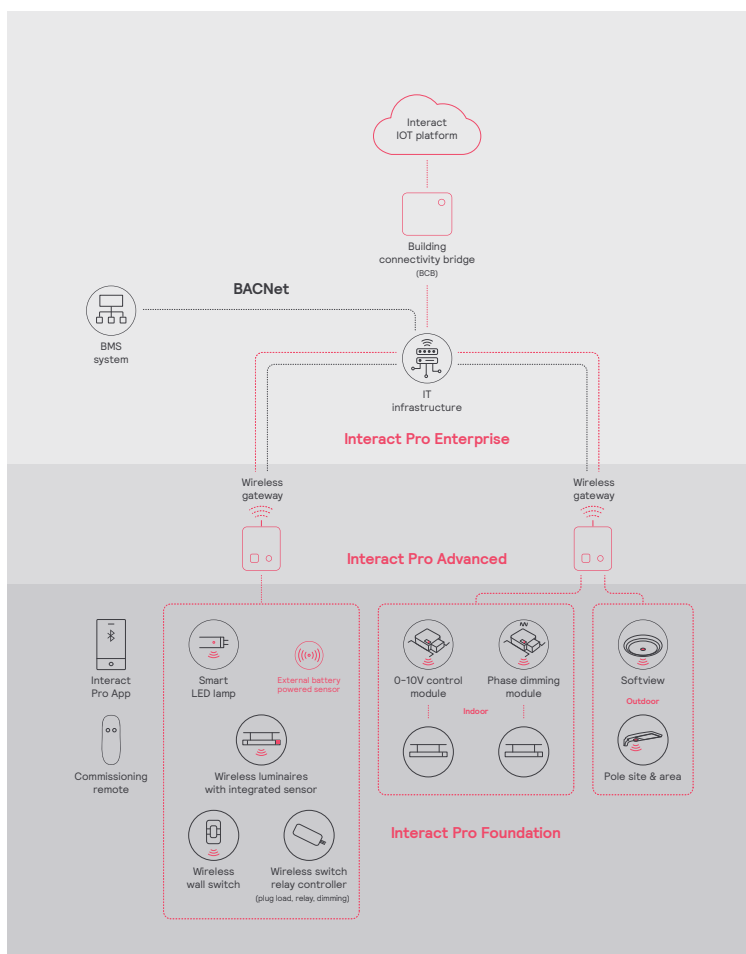
up to 6000 lumens

Interact Pro scalable system			
	Foundation	Advanced	Enterprise
Dimming, grouping, and zoning	✓	✓	✓
Bluetooth and ZigBee enabled	✓	✓	✓
Motion sensing and daylight harvesting	✓	✓	✓
Integration with 0-10V and phase dimming fixtures	✓	✓	✓
Code compliance	✓	✓	✓
Granular dimming and dwell time	✓	✓	✓
Energy reporting and monitoring		✓	✓
Scheduling		✓	✓
Demand response		✓	✓
BMS integration (BACnet)			✓
Floor plan visualization			✓
IoT sensors for wellness			✓
IoT Apps for productivity			✓

Currently supported maximum system size

To be able to design the lighting system correctly for the customer, it is important to know the prime characteristics of the system, its possibilities and limitations.

System level	
Total number of gateways	Unlimited
Total number of devices	200 per network
• luminaires with integrated sensors	150
• smart TLEDs	150
Total number of ZGP devices (sensors and switches)	50
• sensors	30
• switches	50
• zones and groups	64
Group level	
Recommended number of lights	40 (recommended 25)
Number of ZGP devices	5
Number of scenes	16



1EVG EvoGrid recessed 1x4

up to 6000 lumens

Photometry

1x4 EvoGrid LED recessed, 3800 nominal delivered lumens

LER – 128

Catalog No. 1EVG38L840-4-D-UNV-DIM Test No. 35203 S/MH 1.2 Lamp Type LED Lumens 3780 Input Watts 29.5 Comparative yearly lighting energy cost per 1000 lumens – \$1.88 based on 3000 hrs. and \$.08 pwr KWH. The photometric results were obtained in the Day-Brite laboratory which is NVLAP accredited by the National Institute of Standards and Technology. Photometric values based on test performed in compliance with LM-79.	Candlepower	Light Distribution	Average Luminance																																																																																																																																							
	<table border="1"> <thead> <tr> <th>Angle</th> <th>End</th> <th>45</th> <th>Cross</th> <th>Back-45</th> </tr> </thead> <tbody> <tr><td>0</td><td>1462</td><td>1462</td><td>1462</td><td>1462</td></tr> <tr><td>5</td><td>1436</td><td>1454</td><td>1465</td><td>1454</td></tr> <tr><td>15</td><td>1369</td><td>1394</td><td>1401</td><td>1394</td></tr> <tr><td>25</td><td>1234</td><td>1258</td><td>1268</td><td>1258</td></tr> <tr><td>35</td><td>1042</td><td>1082</td><td>1100</td><td>1082</td></tr> <tr><td>45</td><td>823</td><td>887</td><td>921</td><td>887</td></tr> <tr><td>55</td><td>604</td><td>687</td><td>726</td><td>687</td></tr> <tr><td>65</td><td>403</td><td>475</td><td>464</td><td>475</td></tr> <tr><td>75</td><td>214</td><td>223</td><td>176</td><td>223</td></tr> <tr><td>85</td><td>56</td><td>13</td><td>11</td><td>13</td></tr> </tbody> </table>	Angle	End	45	Cross	Back-45	0	1462	1462	1462	1462	5	1436	1454	1465	1454	15	1369	1394	1401	1394	25	1234	1258	1268	1258	35	1042	1082	1100	1082	45	823	887	921	887	55	604	687	726	687	65	403	475	464	475	75	214	223	176	223	85	56	13	11	13	<table border="1"> <thead> <tr> <th>Degrees</th> <th>Lumens</th> <th>% Luminaire</th> </tr> </thead> <tbody> <tr><td>0-30</td><td>1108</td><td>29.3</td></tr> <tr><td>0-40</td><td>1783</td><td>47.1</td></tr> <tr><td>0-60</td><td>3069</td><td>81.1</td></tr> <tr><td>0-90</td><td>3782</td><td>100.0</td></tr> <tr><td>0-180</td><td>3782</td><td>100.0</td></tr> </tbody> </table>	Degrees	Lumens	% Luminaire	0-30	1108	29.3	0-40	1783	47.1	0-60	3069	81.1	0-90	3782	100.0	0-180	3782	100.0	<table border="1"> <thead> <tr> <th>Zone</th> <th>End</th> <th>45°</th> <th>Cross</th> </tr> </thead> <tbody> <tr><td>45</td><td>12129</td><td>13083</td><td>13584</td></tr> <tr><td>55</td><td>10986</td><td>12488</td><td>13200</td></tr> <tr><td>65</td><td>9940</td><td>11723</td><td>11452</td></tr> <tr><td>75</td><td>8617</td><td>8995</td><td>7106</td></tr> <tr><td>85</td><td>6663</td><td>1507</td><td>1316</td></tr> </tbody> </table>	Zone	End	45°	Cross	45	12129	13083	13584	55	10986	12488	13200	65	9940	11723	11452	75	8617	8995	7106	85	6663	1507	1316																																						
Angle	End	45	Cross	Back-45																																																																																																																																						
0	1462	1462	1462	1462																																																																																																																																						
5	1436	1454	1465	1454																																																																																																																																						
15	1369	1394	1401	1394																																																																																																																																						
25	1234	1258	1268	1258																																																																																																																																						
35	1042	1082	1100	1082																																																																																																																																						
45	823	887	921	887																																																																																																																																						
55	604	687	726	687																																																																																																																																						
65	403	475	464	475																																																																																																																																						
75	214	223	176	223																																																																																																																																						
85	56	13	11	13																																																																																																																																						
Degrees	Lumens	% Luminaire																																																																																																																																								
0-30	1108	29.3																																																																																																																																								
0-40	1783	47.1																																																																																																																																								
0-60	3069	81.1																																																																																																																																								
0-90	3782	100.0																																																																																																																																								
0-180	3782	100.0																																																																																																																																								
Zone	End	45°	Cross																																																																																																																																							
45	12129	13083	13584																																																																																																																																							
55	10986	12488	13200																																																																																																																																							
65	9940	11723	11452																																																																																																																																							
75	8617	8995	7106																																																																																																																																							
85	6663	1507	1316																																																																																																																																							
	Coefficients of Utilization	EFFECTIVE FLOOR CAVITY REFLECTANCE 20 PER (pfc=0.20)																																																																																																																																								
		<table border="1"> <thead> <tr> <th rowspan="2">pcc</th> <th colspan="3">80</th> <th colspan="3">70</th> <th colspan="3">50</th> </tr> <tr> <th>70</th> <th>50</th> <th>30</th> <th>70</th> <th>50</th> <th>30</th> <th>50</th> <th>30</th> </tr> </thead> <tbody> <tr><td>pw</td><td></td><td></td><td></td><td></td><td></td><td></td><td></td><td></td></tr> <tr><td>RCR</td><td></td><td></td><td></td><td></td><td></td><td></td><td></td><td></td></tr> <tr><td>0</td><td>118</td><td>118</td><td>118</td><td>115</td><td>115</td><td>115</td><td>111</td><td>111</td></tr> <tr><td>1</td><td>109</td><td>105</td><td>101</td><td>107</td><td>102</td><td>98</td><td>97</td><td>94</td></tr> <tr><td>2</td><td>100</td><td>92</td><td>84</td><td>96</td><td>90</td><td>83</td><td>85</td><td>81</td></tr> <tr><td>3</td><td>91</td><td>81</td><td>72</td><td>89</td><td>79</td><td>71</td><td>76</td><td>69</td></tr> <tr><td>4</td><td>82</td><td>71</td><td>63</td><td>81</td><td>69</td><td>61</td><td>68</td><td>60</td></tr> <tr><td>5</td><td>77</td><td>64</td><td>55</td><td>75</td><td>63</td><td>55</td><td>60</td><td>54</td></tr> <tr><td>6</td><td>70</td><td>57</td><td>48</td><td>68</td><td>56</td><td>48</td><td>55</td><td>47</td></tr> <tr><td>7</td><td>66</td><td>53</td><td>44</td><td>64</td><td>52</td><td>42</td><td>50</td><td>42</td></tr> <tr><td>8</td><td>60</td><td>47</td><td>40</td><td>59</td><td>46</td><td>39</td><td>46</td><td>39</td></tr> <tr><td>9</td><td>56</td><td>44</td><td>35</td><td>56</td><td>42</td><td>35</td><td>41</td><td>34</td></tr> <tr><td>10</td><td>54</td><td>40</td><td>33</td><td>53</td><td>40</td><td>33</td><td>39</td><td>32</td></tr> </tbody> </table>		pcc	80			70			50			70	50	30	70	50	30	50	30	pw									RCR									0	118	118	118	115	115	115	111	111	1	109	105	101	107	102	98	97	94	2	100	92	84	96	90	83	85	81	3	91	81	72	89	79	71	76	69	4	82	71	63	81	69	61	68	60	5	77	64	55	75	63	55	60	54	6	70	57	48	68	56	48	55	47	7	66	53	44	64	52	42	50	42	8	60	47	40	59	46	39	46	39	9	56	44	35	56	42	35	41	34	10	54	40	33	53	40	33	39	32
pcc	80				70			50																																																																																																																																		
	70	50	30	70	50	30	50	30																																																																																																																																		
pw																																																																																																																																										
RCR																																																																																																																																										
0	118	118	118	115	115	115	111	111																																																																																																																																		
1	109	105	101	107	102	98	97	94																																																																																																																																		
2	100	92	84	96	90	83	85	81																																																																																																																																		
3	91	81	72	89	79	71	76	69																																																																																																																																		
4	82	71	63	81	69	61	68	60																																																																																																																																		
5	77	64	55	75	63	55	60	54																																																																																																																																		
6	70	57	48	68	56	48	55	47																																																																																																																																		
7	66	53	44	64	52	42	50	42																																																																																																																																		
8	60	47	40	59	46	39	46	39																																																																																																																																		
9	56	44	35	56	42	35	41	34																																																																																																																																		
10	54	40	33	53	40	33	39	32																																																																																																																																		

1x4 EvoGrid LED recessed, 3800 nominal delivered lumens

LER – 136

Catalog No. 1EVG38L840-4-R-UNV-DIM Test No. 38716 S/MH 1.3 Lamp Type LED Lumens 3985 Input Watts 29 Comparative yearly lighting energy cost per 1000 lumens – \$1.76 based on 3000 hrs. and \$.08 pwr KWH. The photometric results were obtained in the Day-Brite laboratory which is NVLAP accredited by the National Institute of Standards and Technology. Photometric values based on test performed in compliance with LM-79.	Candlepower	Light Distribution	Average Luminance																																																																																																																																							
	<table border="1"> <thead> <tr> <th>Angle</th> <th>End</th> <th>45</th> <th>Cross</th> <th>Back-45</th> </tr> </thead> <tbody> <tr><td>0</td><td>1422</td><td>1422</td><td>1422</td><td>1422</td></tr> <tr><td>5</td><td>1393</td><td>1418</td><td>1426</td><td>1418</td></tr> <tr><td>15</td><td>1329</td><td>1367</td><td>1389</td><td>1367</td></tr> <tr><td>25</td><td>1208</td><td>1268</td><td>1311</td><td>1268</td></tr> <tr><td>35</td><td>1042</td><td>1134</td><td>1195</td><td>1134</td></tr> <tr><td>45</td><td>846</td><td>964</td><td>1033</td><td>964</td></tr> <tr><td>55</td><td>640</td><td>762</td><td>820</td><td>762</td></tr> <tr><td>65</td><td>406</td><td>499</td><td>522</td><td>499</td></tr> <tr><td>75</td><td>212</td><td>249</td><td>199</td><td>249</td></tr> <tr><td>85</td><td>48</td><td>18</td><td>17</td><td>18</td></tr> </tbody> </table>	Angle	End	45	Cross	Back-45	0	1422	1422	1422	1422	5	1393	1418	1426	1418	15	1329	1367	1389	1367	25	1208	1268	1311	1268	35	1042	1134	1195	1134	45	846	964	1033	964	55	640	762	820	762	65	406	499	522	499	75	212	249	199	249	85	48	18	17	18	<table border="1"> <thead> <tr> <th>Degrees</th> <th>Lumens</th> <th>% Luminaire</th> </tr> </thead> <tbody> <tr><td>0-30</td><td>1103</td><td>27.7</td></tr> <tr><td>0-40</td><td>1808</td><td>45.4</td></tr> <tr><td>0-60</td><td>3211</td><td>80.6</td></tr> <tr><td>0-90</td><td>3984</td><td>100.0</td></tr> <tr><td>0-180</td><td>3985</td><td>100.0</td></tr> </tbody> </table>	Degrees	Lumens	% Luminaire	0-30	1103	27.7	0-40	1808	45.4	0-60	3211	80.6	0-90	3984	100.0	0-180	3985	100.0	<table border="1"> <thead> <tr> <th>Zone</th> <th>End</th> <th>45°</th> <th>Cross</th> </tr> </thead> <tbody> <tr><td>45</td><td>6238</td><td>7107</td><td>7616</td></tr> <tr><td>55</td><td>5816</td><td>6927</td><td>7455</td></tr> <tr><td>65</td><td>5007</td><td>6156</td><td>6436</td></tr> <tr><td>75</td><td>4260</td><td>5013</td><td>4008</td></tr> <tr><td>85</td><td>2871</td><td>1065</td><td>987</td></tr> </tbody> </table>	Zone	End	45°	Cross	45	6238	7107	7616	55	5816	6927	7455	65	5007	6156	6436	75	4260	5013	4008	85	2871	1065	987																																						
Angle	End	45	Cross	Back-45																																																																																																																																						
0	1422	1422	1422	1422																																																																																																																																						
5	1393	1418	1426	1418																																																																																																																																						
15	1329	1367	1389	1367																																																																																																																																						
25	1208	1268	1311	1268																																																																																																																																						
35	1042	1134	1195	1134																																																																																																																																						
45	846	964	1033	964																																																																																																																																						
55	640	762	820	762																																																																																																																																						
65	406	499	522	499																																																																																																																																						
75	212	249	199	249																																																																																																																																						
85	48	18	17	18																																																																																																																																						
Degrees	Lumens	% Luminaire																																																																																																																																								
0-30	1103	27.7																																																																																																																																								
0-40	1808	45.4																																																																																																																																								
0-60	3211	80.6																																																																																																																																								
0-90	3984	100.0																																																																																																																																								
0-180	3985	100.0																																																																																																																																								
Zone	End	45°	Cross																																																																																																																																							
45	6238	7107	7616																																																																																																																																							
55	5816	6927	7455																																																																																																																																							
65	5007	6156	6436																																																																																																																																							
75	4260	5013	4008																																																																																																																																							
85	2871	1065	987																																																																																																																																							
	Coefficients of Utilization	EFFECTIVE FLOOR CAVITY REFLECTANCE 20 PER (pfc=0.20)																																																																																																																																								
		<table border="1"> <thead> <tr> <th rowspan="2">pcc</th> <th colspan="3">80</th> <th colspan="3">70</th> <th colspan="3">50</th> </tr> <tr> <th>70</th> <th>50</th> <th>30</th> <th>70</th> <th>50</th> <th>30</th> <th>50</th> <th>30</th> </tr> </thead> <tbody> <tr><td>pw</td><td></td><td></td><td></td><td></td><td></td><td></td><td></td><td></td></tr> <tr><td>RCR</td><td></td><td></td><td></td><td></td><td></td><td></td><td></td><td></td></tr> <tr><td>0</td><td>118</td><td>118</td><td>118</td><td>115</td><td>115</td><td>115</td><td>111</td><td>111</td></tr> <tr><td>1</td><td>109</td><td>105</td><td>100</td><td>106</td><td>102</td><td>97</td><td>97</td><td>94</td></tr> <tr><td>2</td><td>98</td><td>91</td><td>84</td><td>96</td><td>89</td><td>82</td><td>85</td><td>81</td></tr> <tr><td>3</td><td>91</td><td>80</td><td>71</td><td>88</td><td>79</td><td>70</td><td>76</td><td>68</td></tr> <tr><td>4</td><td>82</td><td>70</td><td>61</td><td>81</td><td>69</td><td>60</td><td>67</td><td>59</td></tr> <tr><td>5</td><td>76</td><td>63</td><td>54</td><td>73</td><td>61</td><td>54</td><td>59</td><td>53</td></tr> <tr><td>6</td><td>69</td><td>56</td><td>47</td><td>68</td><td>56</td><td>47</td><td>54</td><td>46</td></tr> <tr><td>7</td><td>65</td><td>52</td><td>42</td><td>63</td><td>51</td><td>42</td><td>48</td><td>41</td></tr> <tr><td>8</td><td>60</td><td>46</td><td>39</td><td>58</td><td>46</td><td>38</td><td>45</td><td>38</td></tr> <tr><td>9</td><td>56</td><td>42</td><td>34</td><td>55</td><td>42</td><td>34</td><td>40</td><td>34</td></tr> <tr><td>10</td><td>53</td><td>40</td><td>32</td><td>52</td><td>39</td><td>32</td><td>38</td><td>30</td></tr> </tbody> </table>		pcc	80			70			50			70	50	30	70	50	30	50	30	pw									RCR									0	118	118	118	115	115	115	111	111	1	109	105	100	106	102	97	97	94	2	98	91	84	96	89	82	85	81	3	91	80	71	88	79	70	76	68	4	82	70	61	81	69	60	67	59	5	76	63	54	73	61	54	59	53	6	69	56	47	68	56	47	54	46	7	65	52	42	63	51	42	48	41	8	60	46	39	58	46	38	45	38	9	56	42	34	55	42	34	40	34	10	53	40	32	52	39	32	38	30
pcc	80				70			50																																																																																																																																		
	70	50	30	70	50	30	50	30																																																																																																																																		
pw																																																																																																																																										
RCR																																																																																																																																										
0	118	118	118	115	115	115	111	111																																																																																																																																		
1	109	105	100	106	102	97	97	94																																																																																																																																		
2	98	91	84	96	89	82	85	81																																																																																																																																		
3	91	80	71	88	79	70	76	68																																																																																																																																		
4	82	70	61	81	69	60	67	59																																																																																																																																		
5	76	63	54	73	61	54	59	53																																																																																																																																		
6	69	56	47	68	56	47	54	46																																																																																																																																		
7	65	52	42	63	51	42	48	41																																																																																																																																		
8	60	46	39	58	46	38	45	38																																																																																																																																		
9	56	42	34	55	42	34	40	34																																																																																																																																		
10	53	40	32	52	39	32	38	30																																																																																																																																		

1EVG EvoGrid recessed 1x4

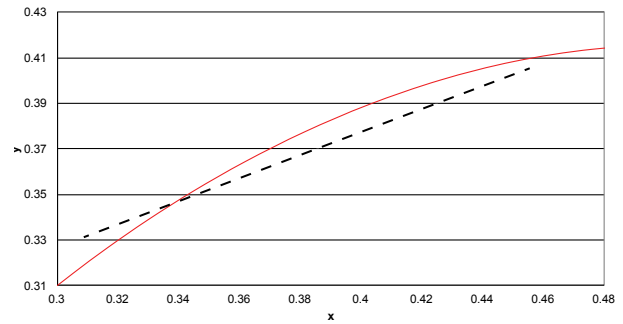
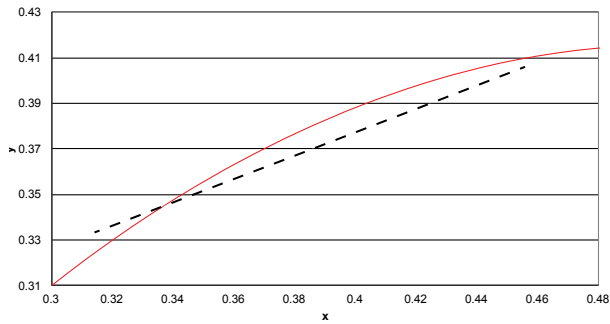
up to 6000 lumens

Tunable White with PoE

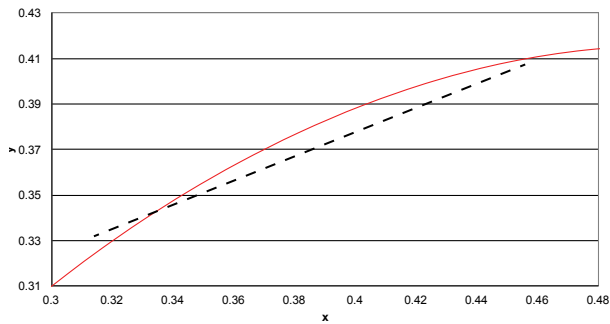
Color Information

1x4 EvoGrid 3000lm	2700K	3000K	3500K	4000K	5000K	6500K
Flux	3019	3017	3015	3013	3010	3007
Power	24	24	23	23	23	22
Efficacy	127	128	130	131	133	136
CCT	83	85	86	87	86	82
CRI	18	24	31	34	29	11
R9	18	23	31	34	31	11

1x4 EvoGrid 3800lm	2700K	3000K	3500K	4000K	5000K	6500K
Flux	3845	3845	3846	3846	3847	3848
Power	30	29	29	29	28	28
Efficacy	130	132	133	135	137	138
CCT	83	85	86	87	86	82
CRI	18	25	31	34	29	11
R9	18	23	31	34	31	11



1x4 EvoGrid 4500lm	2700K	3000K	3500K	4000K	5000K	6500K
Flux	4525	4527	4530	4532	4535	4538
Power	39	36	35	34	33	34
Efficacy	117	126	130	133	137	136
CCT	83	84	86	86	85	82
CRI	17	24	31	34	29	11
R9	18	23	31	34	31	11



1EVG EvoGrid recessed 1x4

up to 6000 lumens

Tunable White with DALI

Electrical Specifications

Input Voltage	120V			277V		
Nominal CCT	2700K			2700K		
Nominal Lumens	3700lm	4500lm	5000lm	3700lm	4500lm	5000lm
Commissioned State						
Power (W)	36.5	44.3	50.0	36.3	44.0	49.5
Current (A)	0.31	0.38	0.42	0.16	0.18	0.2
Power Factor	0.98	0.99	0.99	0.85	0.88	0.90
THD (%)	15	14	12	18	17	16
Off State Power (W)	0.6	0.6	0.6	0.9	0.9	0.9
Non-Commissioned State						
Power (W)	67.0	83.0	92.0	66.0	82.0	91.0
Current (A)	0.56	0.70	0.78	0.26	0.32	0.35

Photometry

1x4 EvoGrid recessed LED with tunable white, 3700 nominal delivered lumens, 2700K CCT

LER – 106

Catalog No.	1EVG37L8TW-4-D-UNV-DTW	Candlepower				Light Distribution			Average Luminance			
Test No.	36222	Angle	End	45	Cross	Degrees	Lumens	% Luminaire	Zone	End	45°	Cross
S/MH	1.2	0	1491	1491	1491	0-30	1122	29.5	45	12226	13192	13651
Lamp Type	LED	5	1468	1482	1486	0-40	1801	47.3	55	10954	12528	13229
Lumens	3807	15	1394	1410	1416	0-60	3094	81.3	65	9801	11755	11437
Input Watts	36	25	1251	1270	1280	0-90	3807	100.0	75	8528	8919	7098
Comparative yearly lighting energy cost per 1000 lumens – \$2.26 based on 3000 hrs. and \$.08 pwr KWH.		35	1053	1088	1106	0-180	3807	100.0	85	6663	1687	1459
		45	829	895	926							
		55	603	689	728							
		65	397	477	464							
		75	212	221	176							
		85	56	14	12							
The photometric results were obtained in the Day-Brite laboratory which is NVLAP accredited by the National Institute of Standards and Technology. Photometric values based on test performed in compliance with LM-79.	Coefficients of Utilization											
	EFFECTIVE FLOOR CAVITY REFLECTANCE 20 PER (pfc=0.20)											
	PCC	80			70			50				
	DW	70	50	30	70	50	30	50	30			
	RCR											
	0	118	118	118	115	115	115	111	111			
	1	109	105	101	107	103	98	97	94			
	2	100	92	84	96	90	83	85	81			
	3	91	81	72	89	79	71	76	69			
	4	82	71	63	81	69	61	68	60			
	5	77	64	55	75	63	55	60	54			
6	70	57	48	68	56	48	55	47				
7	66	53	44	64	52	44	50	42				
8	60	47	40	59	46	39	46	39				
9	56	44	35	56	44	35	41	34				
10	54	40	33	53	40	33	39	32				

1EVG EvoGrid recessed 1x4

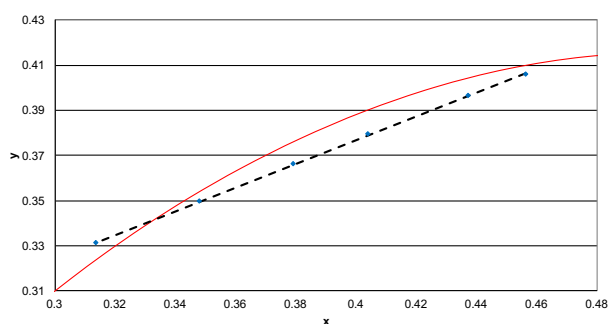
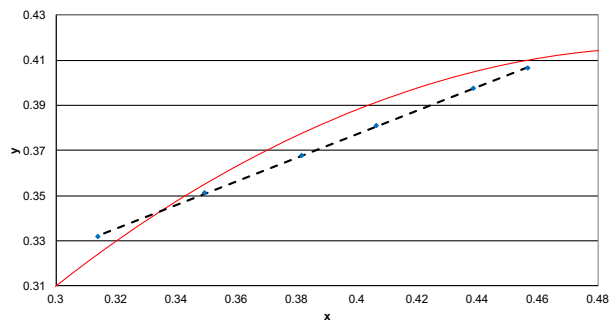
up to 4500 lumens

Tunable White with DALI

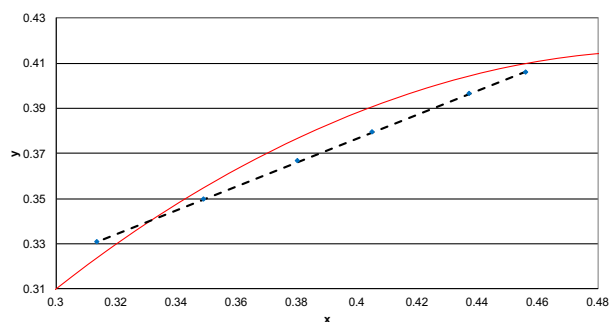
Color information

1x4 EvoGrid 3700lm	2700K	3000K	3500K	4000K	5000K	6500K
Flux	3725	3757	3737	3785	3653	3643
Power	36.4	38.1	35.7	34.9	32.9	29.8
Efficacy	102.3	98.7	104.8	108.6	111.0	122.1
CCT	2716	2919	3393	3904	4836	6423
CRI	83	84	86	87	86	82
R9	18	23	31	34	31	11
x	0.4565	0.4385	0.4064	0.3814	0.3494	0.3138
y	0.4065	0.3974	0.3809	0.3679	0.3510	0.3321
Duv	-0.0012	-0.0029	-0.0046	-0.0045	-0.0020	0.0042

1x4 EvoGrid 4500lm	2700K	3000K	3500K	4000K	5000K	6500K
Flux	4460	4549	4600	4708	4607	4632
Power	44.2	45.5	43.1	42.5	40.6	38.3
Efficacy	100.8	99.9	106.7	110.9	113.6	120.9
CCT	2718	2937	3436	3960	4892	6448
CRI	83	84	86	87	86	82
R9	17	23	31	34	30	11
x	0.4562	0.4369	0.4039	0.3790	0.3477	0.3135
y	0.4063	0.3965	0.3794	0.3663	0.3496	0.3312
Duv	-0.0013	-0.0030	-0.0047	-0.0046	-0.0020	0.0039



1x4 EvoGrid 5000lm	2700K	3000K	3500K	4000K	5000K	6500K
Flux	4950	5040	5070	5169	5017	4982
Power	49.7	50.7	47.6	46.5	44.0	41.4
Efficacy	99.7	99.3	106.6	111.1	113.9	120.3
CCT	2719	2933	3417	3929	4853	6454
CRI	83	84	86	87	86	82
R9	17	23	31	34	31	11
x	0.4560	0.4372	0.4049	0.3802	0.3488	0.3134
y	0.4061	0.3966	0.3798	0.3668	0.3500	0.3309
Duv	-0.0013	-0.0030	-0.0048	-0.0047	-0.0023	0.0038



© 2021 Signify Holding. All rights reserved. The information provided herein is subject to change, without notice. Signify does not give any representation or warranty as to the accuracy or completeness of the information included herein and shall not be liable for any action in reliance thereon. The information presented in this document is not intended as any commercial offer and does not form part of any quotation or contract, unless otherwise agreed by Signify.

Signify North America Corporation
200 Franklin Square Drive,
Somerset, NJ 08873
Telephone 855-486-2216

Signify Canada Ltd.
281 Hillmount Road,
Markham, ON, Canada L6C 2S3
Telephone 800-668-9008

All trademarks are owned by Signify Holding or their respective owners.