

LUMEC

by  Signify

Controlled, comfortable, compelling

Roadway

RoadFocus
Reduced glare



Do you want to hear compliments instead of complaints?

We understand the problems you face.

- You want comfortable lighting that minimizes annoying or disabling glare
- You require better control without sacrificing performance
- You need to maintain fixture spacing and uniformity
- You must have energy efficient solutions that meet your lighting requirements



No more of this



Help minimize perceived glare without minimizing performance



**RoadFocus
reduced glare**

What makes RoadFocus LED reduced glare cobra heads different?

- Exclusive light engine that provides uniform reduced glare illumination
- Designed to lower perceived brightness of the luminaire
- Excellent uniformity with type 2/3M distribution optimized for roadway applications
- Higher efficacy over similar solutions on the market, contributing to reduced energy costs

1 Die-cast housing

Rugged design for maximum durability

2 Driver

Dimming driver(0-10V) is standard and DALI and Sensor Ready drivers are optional, enabling additional controls, now or in the future

3 Mounting

1.66"-2.375" O.D. (1.25"-2" NPS) tenon for optimal mounting versatility -5° to +5° tilt in 2.5° steps

4 Bird guard

Standard with all RoadFocus luminaires

5 Surge protection

Standard SP1 and optional SP2 surge suppressors protect the luminaire

6 IP66 light engines

Reliable light engines are IP66 sealed to protect against dust and moisture so that LED life is extended

7 Reduced glare light engine

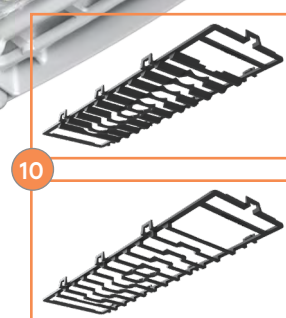
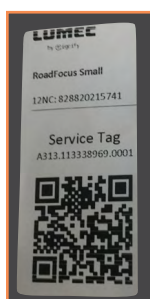
Exclusive light engine designed to reduce surface brightness and perceived glare

8 Field Adjustable Wattage Selector

Optional FAWS switch can be operated even while wearing lineman's gloves, providing tactile, audible and visual switch position markers

9 Service Tag

Signify's innovative way to provide assistance throughout the life of the product



10 Shielding

Optional house and front side shielding is available

11 Twist lock receptacle

The standard 7-pin and optional 5-pin NEMA twist lock receptacles facilitate connected lighting solutions for easy upgrade in the future

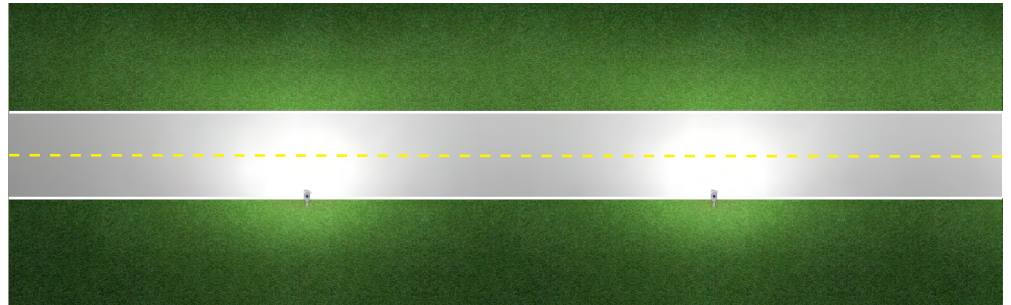
12 SR driver & sensor receptacle

Optional to add flexibility for now or in the future, luminaires ship with a protective cap

RoadFocus reduced glare uniquely balances glare and proper illumination

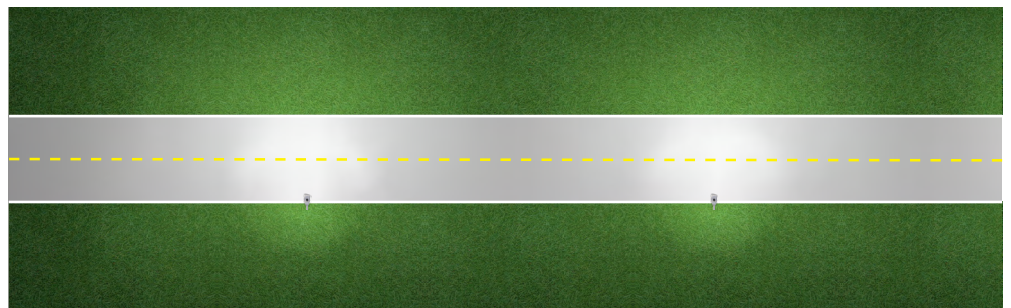
RoadFocus reduced glare

Even road illumination
Excellent backlight control
Minimal spill past road



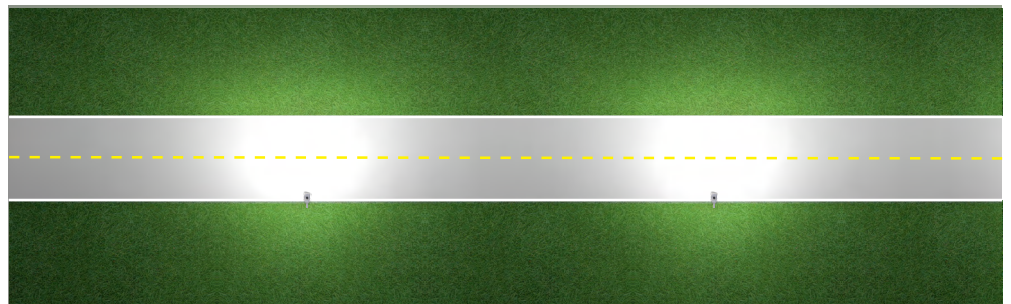
Competitor A

Noticeable illumination reduction
Good backlight control
Moderate spill past road

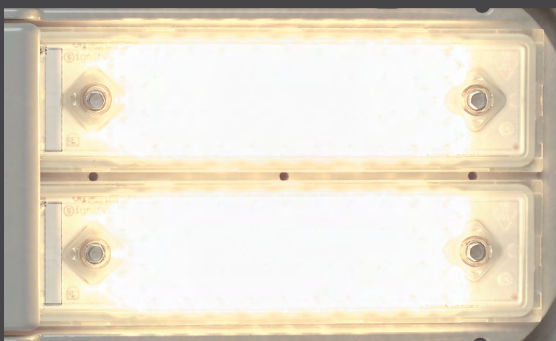


Competitor B

Hot spot on road
Poor backlight control
Moderate spill past road



Reduced glare light engine vs traditional



A glance at the rest of the RoadFocus family

RoadFocus gen 2:

- Available in 3 sizes
- Broad range of distributions
- Excellent uniformity and reliability
- Various shielding options (click to see)
- Future-proof control options
- Service Tag standard



RoadFocus off-road:

- Available in large and medium sizes
- Specialized off road optics
- Versatile adapter that be mounted vertically or horizontally
- Variable tilt between -5 and $+45^{\circ}$ (5° steps)



Connectability and Utility portfolio



Luminaire solutions

Basic. Autonomous. Affordable.

Simple, individual outdoor lighting dimming and management without the need for remote access.

- Field Adjustable Wattage Selector

Do you want more?

You can enhance your connected lighting systems with the options below.

- Sensor Ready Driver
- Sensor Ready Receptacle

Looking for a full line of Utility luminaires?

Visit www.signify.com/utilitylighting

Signify understands the diverse needs of utility companies and the pressures you face to provide a reliable solution that will satisfy your customers' demands. Choose us, and make your job easier.



interact City

City solutions

Advanced. Powerful. Extensive.

Widespread or multi-site lighting management with detailed asset management that can grow along with your needs.

- Interact City Connected Lighting System with Interact City connector node

Learn more at www.interact-lighting.com/en-us/what-is-possible/interact-city

For more information

Visit us at www.signify.com/proluminaires for more on Signify stand-alone and connected outdoor lighting solutions.



