

# Day-Brite

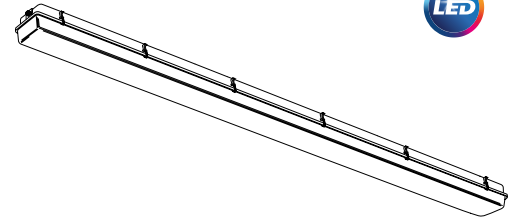
## CFI

by Signify

## Industrial

### Vaporlume LED DW

8' sealed industrial  
10,200 to 14,000 lm



Control options available

Day-Brite / CFI Vaporlume LED sealed industrial DW is a specialized wet location, IP rated product designed for use in both indoor and outdoor environments. It is a wet location listed, non-corrosive luminaire available in both fluorescent and LED light sources.

Project: \_\_\_\_\_  
 Location: \_\_\_\_\_  
 Cat.No: \_\_\_\_\_  
 Type: \_\_\_\_\_  
 Lumens: \_\_\_\_\_ Qty: \_\_\_\_\_  
 Notes: \_\_\_\_\_

### Ordering guide

Example: DWAE51L840-8-UNV-MD360W

Family	Application	Lens	Hubs Installed	Lumen Package <sup>1</sup>	Color Temp.	Length	Voltage	Driver	Options
<b>D</b>	<b>W</b>		<b>E</b>		–	–	–	–	
<b>D</b> Sealed industrial	<b>W</b> Wet Location	<b>A</b> DR Acrylic <b>P</b> Polycarbonate <b>L</b> Enhanced LED Acrylic	<b>E</b> Ends only	<b>51L</b> 10,200 nominal lumens (25°C ambient) <b>51LH</b> 10,200 nominal lumens (40°C ambient) <b>70L</b> 14,000 nominal lumens (25°C ambient)  Other lumen packages may be ordered in increments of 100lm up to 7000 lumens.	<b>830</b> 80 CRI, 3000K <b>835</b> 80 CRI, 3500K <b>840</b> 80 CRI, 4000K <b>850</b> 80 CRI, 5000K	<b>8</b> 8'	<b>UNV</b> Universal Voltage, 120-277 volt <b>347<sup>2</sup></b> 347 volt <b>480<sup>2</sup></b> 480 volt	<b>blank</b> 0-10V Step dimming to 40% input power <b>SDIM<sup>3</sup></b>	<b>MD360W<sup>6</sup></b> Wet location occupancy sensor, external <b>MD360WD<sup>6</sup></b> Wet location occupancy sensor, (ON/DIM to 10%) <b>WHP</b> Wide beam optic <b>EMLED<sup>4</sup></b> Integral emergency <b>IP67</b> Protection against effects of immersion <b>GLR</b> Fusing, fast blow <b>SWZCSH<sup>5</sup></b> Interact Pro scalable high bay sensor with integral daylight & occupancy sensing, advanced grouping with dwell time <b>SNH200<sup>5</sup></b> Integral EasySense occupancy & daylight sensor, with advanced SpaceWise type wireless grouping <b>SSL</b> Stainless steel latches

### Footnotes

- Lumen package codes are for 4' units. 8' units produce double the lumen output (as shown in the descriptors).
- All 347V and 480V models available only for (-20°C to 25°C) ambient. Not available for use with 51LH or SDIM options.
- Step dim (SDIM) option not available on 51LH and 70L.
- EMLED option not available on 347V or 480V models. 51L is fully illuminated, and 70L is half illuminated to 1100lm nominal.
- High bay motion detector. Motion sensing zone is extremely limited if used below 15' mounting height.
- Not available with SWZCSH or SNH200 option.

### Accessories (order separately)

- TBK** – Stainless Steel Top Bracket Kit (pair of brackets plus hardware)
- EBK** – Stainless Steel End Bracket Kit (pair of brackets plus hardware)
- WBK** – Stainless Steel Wraparound Bracket Kit (pair of brackets)
- FKR-126** – Chain Hanger Set (requires TBK)
- V2/DW-8ARL** – 8' Acrylic Replacement Lens
- V2/DW-8PRL-CS** – 8' Polycarbonate Replacement Lens
- V2/DW-8LRA** – 8' LED Frosted Acrylic Replacement Lens



interact ready.

# DW Vaporlume LED sealed industrial

8', 10,200 to 14,000 lumens

## Application

- Ideally suited for use in refrigerated cold storage, industrial, parking garage, and canopy applications.
- Acceptable for outdoor as well as indoor installations.
- Can be surface (wall/ceiling) or suspended mounted unless otherwise specified.
- Wet Location – Areas of high humidity, water vapor, rain, incidental water spray, or other non-corrosive or nonflammable liquid.
- Excellent for applications such as garages, stairwells, storage areas, horizontal shelf-mount refrigerated cases, and cold storage.
- Mounting brackets available, order separately.
- IP65 rating standard. IP67 configuration available.
- LED sources provide excellent low temperature performance. This product can replace a fluorescent model in cold environments with significant energy savings.
- 51LH model listed for use in -35°C to 40°C ambient. 50,000 hour L70 lumen maintenance.
- 51L/70L models listed for use in -20°C to 25°C ambient. L70 lumen maintenance is 100,000 hours for 51L model, and 50,000 hours for 70L.
- NSF Certified for Non-Food Zone Installations.
- EMLLED 1100lm nominal in DC mode
- WHP wide optic is an acrylic lens factory installed on the LED arrays, provides compliance to DLC requirements for parking garage luminaires

## Construction/Finish

- Non-conductive, non-corrosive housing.
- Smooth exterior surface for easy cleaning.
- White one piece, molded fiberglass reinforced polyester body. No rusting, no oxidation, and no corrosion.
- Standard acrylic lens (A) is stippled sheet of .130" nominal thickness.
- Optional LED lens (L) designed specifically to further reduce pixilated glare from LED's. Linear rib profile.
- Optional polycarbonate lens (P) will not be yellowed by LED sources because they do not produce UV.
- Continuous compressible closed cell gasket provides tight seal between plastic enclosure and luminaire body.

- White ABS cam latches standard.
- Pre-painted steel lighting channel.
- Two gasketed threaded (½" trade size) wet location hubs installed on ends.

## Electrical

- High efficiency LEDs provide up to 100,000 hour rated life (L70, defined as 70% lumen maintenance @ rated maximum ambient).
- Dimming to 5% on 0-10V controls standard. Step dim (SDIM) option available, 100/40% levels.
- Driver and LED boards are accessible from below. LED boards are individually replaceable if required.
- Combinations are available providing as much as 121 delivered lumens per Watt.
- Nominal lumen packages are 10,200 and 14,000 nominal, providing flexibility to optimize light levels for a specific application.
- LED sources provide full illumination in low temperature applications, unlike fluorescent sources that provide reduced light levels in very cold environments.
- LED sources can be frequently switched with no negative impact on life.
- Minimum 80 CRI provides smooth color rendering that rivals or exceeds performance of fluorescent lamps.
- Light output from the luminaire contains no infrared or ultraviolet energy, so the light won't heat or fade the objects being lit.
- Available motion sensor further increases energy savings in areas where occupancy is not continuous.

## Labels

- cETLus listed to UL 1598. Suitable for use in wet locations.
- 5 Year Limited Warranty, [www.signify.com/warranties](http://www.signify.com/warranties)
- Certain luminaire components may be adversely affected by contaminants. If sulfur, chlorine, or petroleum based solutions, or other contaminants will be in the area of operation, please consult factory as damage caused by these contaminants are not covered under our limited warranty.

## Interact Pro scalable sensor for Foundation, Advanced & Enterprise tiers (SWZCSH and an evolution of SpaceWise)

- SWZCSH is a connected sensor with integral occupancy and daylight sensing and supports wireless mesh connectivity.
- The sensor works in the Foundation mode (similar to SpaceWise) when configured without a gateway or in an Interact Pro

Advanced or Enterprise mode if a compatible gateway is used.

- Interact Pro includes an App, a portal and a broad portfolio of wireless luminaires, lamps and retrofit kits all working on the same system.

- Startup is implemented via Interact Pro App (Android or iPhone) & BlueTooth connectivity. The App provides flexibility to choose between a gateway or non gateway mode for setup.

- Setup with the gateway requires wired internet access to the gateway. It is possible to add a gateway at a later point.

- Prepare project configuration steps remotely and use IRT9015 remote

onsite to identify and group devices together.

- Compatible with:

- UID8451/10 wireless dimmer switch

- SWS200 wireless scene switch

- Battery powered IP42 presence sensor OCC sensor IA CM WH 10/1

- Battery powered IP42 presence & daylight sensor OCC-DL sensor IA CM IP42 WH

- LCN3110/05 battery powered IP65 presence sensor OCC sensor IA CM IP65 WH

- LCN3120/05 battery powered IP65 presence & daylight sensor OCC-DL sensor IA CM IP65 WH

- For more information on Interact Pro visit: [www.interact-lighting.com/interactproscalablesystem](http://www.interact-lighting.com/interactproscalablesystem)

## SNH200 EasySense

- Philips field apps allow programming of occupancy & daylight sensing parameters and fine-tuning of light levels during installation. It can also be used for grouping of fixtures.

- Download "Philips field apps" from the Google Play Store.

- Register for the commissioning app at <http://registration.componentcloud.philips.com/appregistration/>.

- The app works on certain Android phones with NFC or IR. See Recommended Phones and the EasySense App User Manual in the download section at <http://www.usa.lighting.philips.com/products/lighting-components/easysense> and follow the "View Downloads" link to register for access to the download area. Navigate to Connected-Lighting-Components and then Philips-EasySense-Sensors to find downloads.

# DW Vaporlume LED sealed industrial

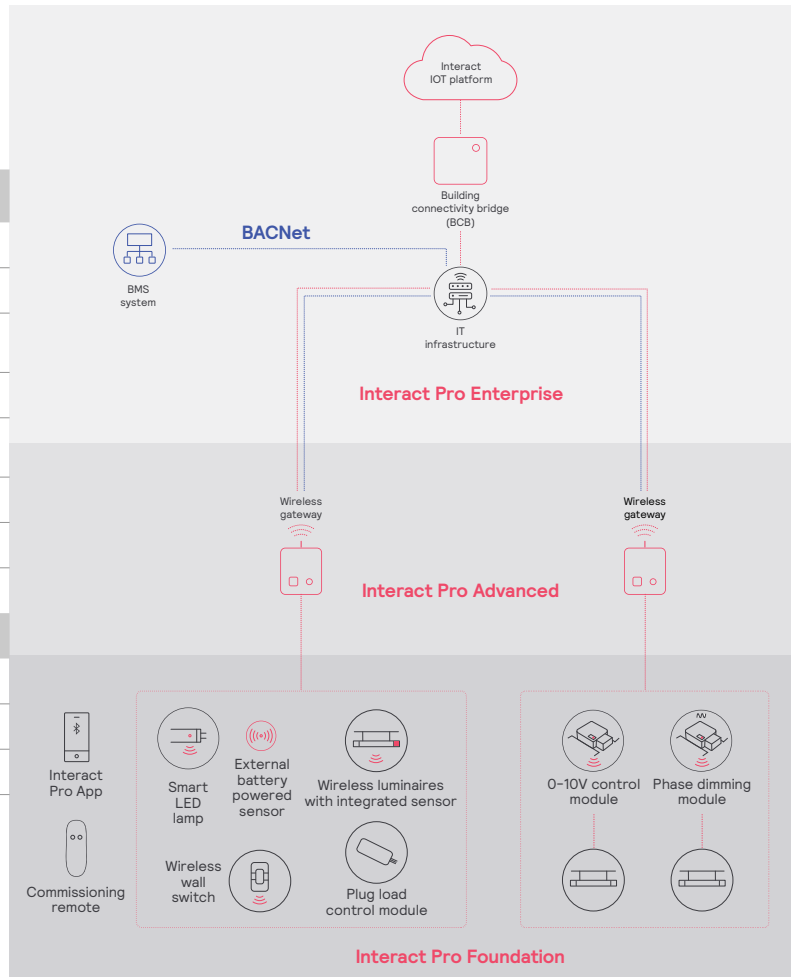
8', 10,200 to 14,000 lumens

Interact Pro scalable system			
	Foundation	Advanced	Enterprise
Dimming, grouping, and zoning	✓	✓	✓
Bluetooth and ZigBee enabled	✓	✓	✓
Motion sensing and daylight harvesting	✓	✓	✓
Integration with 0-10V and phase dimming fixtures	✓	✓	✓
Code compliance	✓	✓	✓
Granular dimming and dwell time	✓	✓	✓
Energy reporting and monitoring		✓	✓
Scheduling		✓	✓
Demand response		✓	✓
BMS integration (BACnet)			✓
Floor plan visualization			✓
IoT sensors for wellness			✓
IoT Apps for productivity			✓

## Currently supported maximum system size

To be able to design the lighting system correctly for the customer, it is important to know the prime characteristics of the system, its possibilities and limitations.

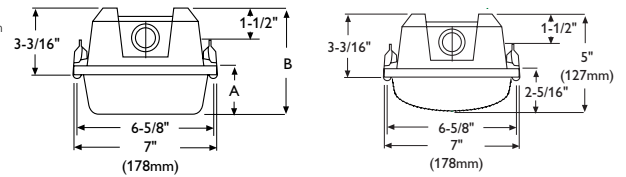
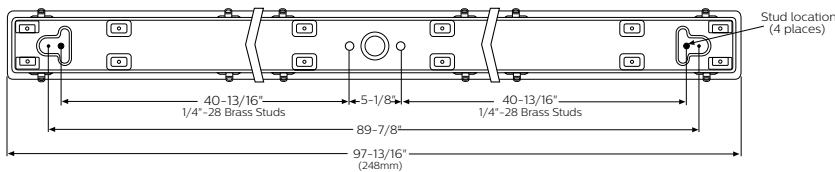
System level	
Total number of gateways	Unlimited
Total number of devices	200 per network
• luminaires with integrated sensors	150
• smart TLEDS	150
Total number of ZGP devices (sensors and switches)	50
• sensors	30
• switches	50
• zones and groups	64
Group level	
Recommended number of lights	40 (recommended 25)
Number of ZGP devices	5
Number of scenes	16



# DW Vaporlume LED sealed industrial

8', 10,200 to 14,000 lumens

## Dimensions



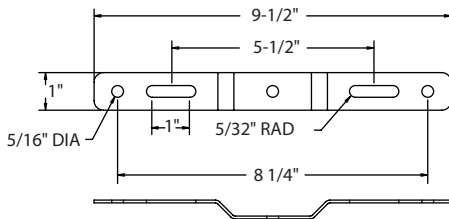
Shallow acrylic (A) and polycarbonate (P) lens

Enhanced LED acrylic lens (L)

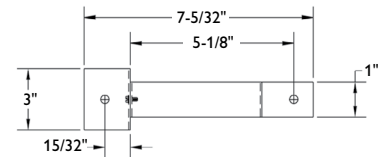
	Acrylic	Polycarbonate
A	2 1/8"	3"
B	5 3/16"	6 1/16"

## Mounting Brackets

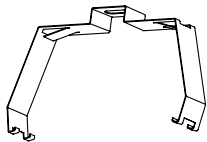
### TBK - Top Mounting Bracket



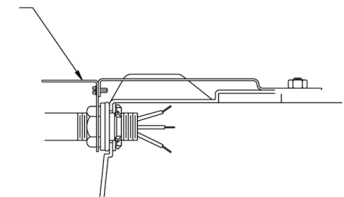
### EBK - End Mounting Bracket



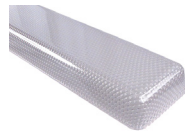
### WBK - Wraparound Mounting Bracket



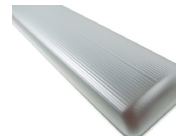
### EBK - End Mounting Bracket



Acrylic Lens



Polycarbonate Lens



LED Frosted Acrylic Lens

## Energy Data

Model	Initial Delivered Lumens @ 25°C Ambient	Input Power	Lumens per Watt	Application notes
DWAE51L840-8-UNV	10,790	89W	121 LPW	• Equivalent to high ballast factor 2 lamp tandem F32T8 at room temperature, 15% energy savings.
DWAE70L840-8-UNV	14,660	130W	113 LPW	• Equivalent to 3 lamp tandem F32T8 at room temperature, 30% energy savings.

