



Wherever it is installed, **Domus** LED post top creates harmony. Whether you are paring it with the rest of the Domus family or using it on its own in your projects, the **Domus 60** becomes an integral part of the landscape design.

Project: _____
 Location: _____
 Cat.No: _____
 Type: _____
 Lamps: _____ Qty: _____
 Notes: _____

Ordering guide

example: DMS60-C-196L1650NW-G2-3-UNV-DMG-FN2-BKTX

| Series | LED module | Gen. | Optical system | Voltage | Driver | Options | | | | Poles/ Brackets | Finish |
|----------------|--|-----------|---|---|--------------|---|--|----------------------------------|--|--|---|
| | | | | | | Receptacle | Control | Luminaire | Decorative | | |
| DMS60-C | | G2 | | | DMG | | | | | | |
| DMS60-C | 3000K 196L450WW 196L650WW 196L1150WW 196L1675WW 196L2100WW 4000K 196L450NW 196L650NW 196L1150NW 196L1675NW 196L2100NW | Gen2 | 1 Type I (ASYM) 2 Type II (ASYM) 3 Type III (ASYM) 4 Type IV (ASYM) 5 Type V (SYMM) | UNV 120-277VAC 347 347VAC 480 480VAC | DMG 0-10V | RC ² Receptacle for twist-lock photocell or shorting cap, 3-pin | PH8 ³ Twist-lock Photoelectric Cell PH9 ³ Shorting cap PHXL ^{1,3} Twist-lock Photoelectric Cell, extended life, UNV (120-277VAC) | SP2 20kW/10kA Surge Protector | FN2 Decorative finial FN3 Decorative finial FN4 Decorative finial FN6 Decorative finial FN8 Decorative finial FN9 Decorative finial FNC Finial Painted Copper TN2.87 2 7/8" (73mm) O.D. 4" (102mm) long tenon TN3 Fitter to fit over 3" (76mm) O.D. 4" (102mm) long tenon TN3.5 Fitter to fit over 3 1/2" (89mm) O.D. 4" (102mm) long tenon | Visit us online at Signify.com/luminaires for details and the complete line of poles and brackets. | Textured BE2TX Midnight Blue BE6TX Ocean Blue BE8TX Royal Blue BG2TX Sandstone BKTX Black BRTX Bronze GN4TX Blue Green GN6TX Forest Green GN8TX Dark Forest Green GNTX Green GY3TX Medium Grey RD2TX Burgundy RD4TX Scarlet WHTX White Other GR Gray Sandtex NP Natural Aluminum TG Hammerstone Gold |

1. Not available with 347V and 480V.
 2. Use of photoelectric cell or shorting cap is required to ensure proper illumination.



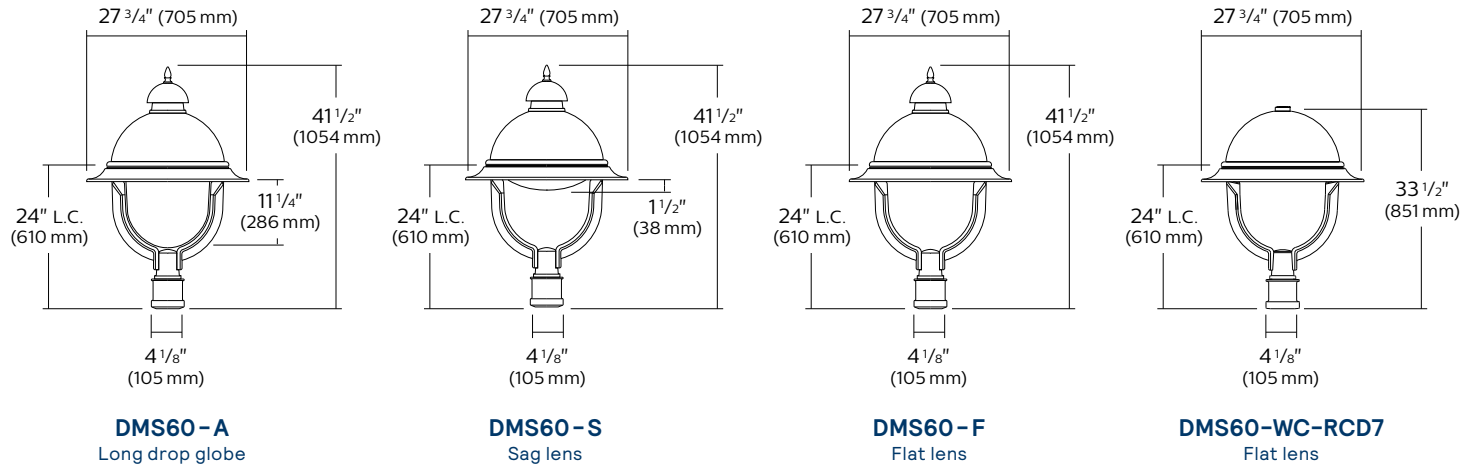
DMS60 Domus LED Post Top

Urban Luminaire

Dimensions

EPA: 2.6 ft² max.

Weight: 40 lbs (18.2kg) max.



3000K Lumen Values

| Ordering Code | Total LEDs | LED current (mA) | Ave. System Wattage (W) | Type 1 | | | Type 2 | | | Type 3 | | |
|---------------|------------|------------------|-------------------------|--------------|----------------|------------|--------------|----------------|------------|--------------|----------------|------------|
| | | | | Lumen Output | Efficacy (LPW) | BUG Rating | Lumen Output | Efficacy (LPW) | BUG Rating | Lumen Output | Efficacy (LPW) | BUG Rating |
| 196L450WW-G2 | 196 | 450 | 21 | 1971 | 94 | B1-U0-G1 | 1989 | 95 | B1-U0-G1 | 2114 | 101 | B1-U0-G1 |
| 196L650WW-G2 | 196 | 650 | 30 | 2787 | 93 | B2-U0-G2 | 2625 | 88 | B1-U0-G1 | 2790 | 93 | B1-U0-G1 |
| 196L1150WW-G2 | 196 | 1150 | 51 | 4871 | 96 | B3-U0-G3 | 4587 | 90 | B2-U0-G2 | 4875 | 96 | B2-U0-G2 |
| 196L1675WW-G2 | 196 | 1675 | 74 | 6744 | 90 | B3-U0-G3 | 6351 | 85 | B3-U0-G3 | 6750 | 90 | B2-U0-G2 |
| 196L2100WW-G2 | 196 | 2100 | 94 | 8227 | 88 | B3-U0-G3 | 7748 | 82 | B3-U0-G3 | 8235 | 88 | B3-U0-G3 |

| Ordering Code | Total LEDs | LED current (mA) | Ave. System Wattage (W) | Type 4 | | | Type 5 | | |
|---------------|------------|------------------|-------------------------|--------------|----------------|------------|--------------|----------------|------------|
| | | | | Lumen Output | Efficacy (LPW) | BUG Rating | Lumen Output | Efficacy (LPW) | BUG Rating |
| 196L450WW-G2 | 196 | 450 | 21 | 2189 | 104 | B1-U0-G1 | 2051 | 98 | B1-U0-G1 |
| 196L650WW-G2 | 196 | 650 | 30 | 2889 | 96 | B1-U0-G1 | 2900 | 97 | B2-U0-G1 |
| 196L1150WW-G2 | 196 | 1150 | 51 | 5048 | 99 | B2-U0-G2 | 5068 | 99 | B3-U0-G1 |
| 196L1675WW-G2 | 196 | 1675 | 74 | 6989 | 93 | B2-U0-G2 | 7018 | 94 | B3-U0-G2 |
| 196L2100WW-G2 | 196 | 2100 | 94 | 8527 | 91 | B2-U0-G2 | 8561 | 91 | B3-U0-G2 |

4000K Lumen Values

| Ordering Code | Total LEDs | LED current (mA) | Ave. System Wattage (W) | Type 1 | | | Type 2 | | | Type 3 | | |
|---------------|------------|------------------|-------------------------|--------------|----------------|------------|--------------|----------------|------------|--------------|----------------|------------|
| | | | | Lumen Output | Efficacy (LPW) | BUG Rating | Lumen Output | Efficacy (LPW) | BUG Rating | Lumen Output | Efficacy (LPW) | BUG Rating |
| 196L450NW-G2 | 196 | 450 | 21 | 2050 | 98 | B1-U0-G1 | 2069 | 99 | B1-U0-G1 | 2199 | 105 | B1-U0-G1 |
| 196L650NW-G2 | 196 | 650 | 30 | 2899 | 97 | B2-U0-G2 | 2730 | 91 | B1-U0-G1 | 2901 | 97 | B1-U0-G1 |
| 196L1150NW-G2 | 196 | ### | 51 | 5065 | 99 | B2-U0-G2 | 4770 | 94 | B2-U0-G2 | 5070 | 99 | B2-U0-G2 |
| 196L1675NW-G2 | 196 | ### | 74 | 7014 | 94 | B3-U0-G3 | 6605 | 88 | B3-U0-G3 | 7020 | 94 | B2-U0-G2 |
| 196L2100NW-G2 | 196 | ### | 94 | 8556 | 91 | B3-U0-G3 | 8058 | 86 | B3-U0-G3 | 8564 | 91 | B3-U0-G3 |

| Ordering Code | Total LEDs | LED current (mA) | Ave. System Wattage (W) | Type 4 | | | Type 5 | | |
|---------------|------------|------------------|-------------------------|--------------|----------------|------------|--------------|----------------|------------|
| | | | | Lumen Output | Efficacy (LPW) | BUG Rating | Lumen Output | Efficacy (LPW) | BUG Rating |
| 196L450NW-G2 | 196 | 450 | 21 | 2277 | 108 | B1-U0-G1 | 2133 | 102 | B1-U0-G1 |
| 196L650NW-G2 | 196 | 650 | 30 | 3004 | 100 | B1-U0-G1 | 3016 | 101 | B2-U0-G1 |
| 196L1150NW-G2 | 196 | ### | 51 | 5250 | 103 | B2-U0-G2 | 5271 | 103 | B3-U0-G1 |
| 196L1675NW-G2 | 196 | ### | 74 | 7269 | 97 | B2-U0-G2 | 7298 | 97 | B3-U0-G2 |
| 196L2100NW-G2 | 196 | ### | 94 | 8868 | 94 | B2-U0-G2 | 8904 | 95 | B3-U0-G2 |

Actual performance may vary due to installation variables including optics, mounting/ceiling height, dirt depreciation, light loss factor, etc.; highly recommended to confirm performance with a layout - contact Applications at signify.com/outdoorluminaire. Consult DLC QPL to confirm your specific fixture selection is DLC approved. Note: Some data may be scaled based on tests of similar but not identical luminaires.

DMS60 Domus LED Post Top

Urban Luminaire

Specifications

Housing

In a round shape, this housing is made of die cast A380 aluminum, c/w a watertight grommet, mechanically assembled to the bracket with four bolts 5/16 18 UNC. This suspension system permits for a full rotation of the luminaire in 90° increments.

Access-mechanism

A die cast A360 aluminum technical ring with latch, hinge and a cast in decorative skirt. The mechanism shall offer tool free access to the inside of the luminaire. An embedded memory retentive gasket shall ensure weatherproofing.

Light engine

Light guide technology provides low-glare, uniform illumination. Composed of 196 LEDs strategically positioned on the edge of the optical plate. Light engine luminous opening size optimized to best achieve a balance between lumen output and optical performance with the need to provide visual comfort. Light engine frame ensures contact with housing to provide heat conduction and sealing against the elements. Light engine is RoHS compliant. Maximum ambient operating temperature up to 40°C(104°F). Standard color temperatures: 3000K +/- 130K, 4000K +/- 130K, Minimum CRI of 80. Also available in 2700K, 3500K, 5000K and Amber (>590nm) with extended lead times. Contact factory for details.

Optical System

The advanced LED comfort optical system provides Types 1, 2, 3, 4 and 5. Composed of high performance UV-stabilized optical grade lens with molded micro-optics to achieve desired distribution optimized to get a exceptional lighting uniformity. Performance tested per LM-79 and TM-15 (IESNA) certifying its photometric performance. Street side indicated luminaire designed with 0% uplight (U0 per IESNA TM-15).

Driver

High power factor of 95%. Electronic driver, operating range 50/60 Hz. Auto adjusting universal voltage input from 120 to 277 and 347 to 480 VAC rated for both application line to line or line to neutral, Class 2, THD of 20% max. Maximum ambient operating temperature from 40°F (40°C) to 130°F (50°C). Certified in compliance to UL1310 cULus requirement. Dry and damp location.

LED Performance

| Predicted lumen depreciation data | | | | |
|-----------------------------------|---------------|----------------------|---------------|------------------------------------|
| Ambient Temperature (°C) | Driver (mA) | Calculated L70 hours | L70 per TM-21 | Lumen Maintenance % @ 60,000 hours |
| 25°C | up to 2100 mA | >100,000 | >60,000 | >83% |

Predicted performance derived from LED manufacturer's data and engineering design estimates, based on IESNA LM-80 methodology. Actual experience may vary due to field application conditions. L70 is the predicted time when LED performance depreciates to 70% of initial lumen output. Calculated per IESNA TM21-11. Published L70 hours limited to 6 times actual LED test hours.

Assembled on a unitized removable tray with Tyco quick disconnect plug resisting to 221°F (105°C). Dimmable driver 0-10V. The current supplying the LEDs will be reduced by the driver if the driver experiences internal overheating as a protection to the LEDs and the electrical components. Output is protected from short circuits, voltage overload and current overload. Automatic recovery after correction. Standard built in driver surge protection of 2.5kV (min) with DALI or CDMG, driver is class 1.

Surge Protection

Surge protector tested in accordance with ANSI/IEEE C62.45 per ANSI/IEEE C62.41.2 Scenario I Category C High Exposure 10kV/10kA waveforms for Line Ground, Line Neutral and Neutral Ground, and in accordance with U.S. DOE (Department of Energy) MSSLC (Municipal Solid State Street Lighting Consortium) model specification for LED roadway luminaires electrical immunity requirements for High Test Level 10kV / 10kA. SP2 20kV/10kA optional.

Driver options

DMG: Dimmable driver 0-10V.

Fitter

Cast 356 aluminum c/w 4 set screws 3/8 16 UNC. This fitter holds 2 arms made of cast aluminum 356 mechanically assembled. Slip fits on a 4" (102mm) outside diameter X 4" (102mm) long tenon.

Wiring

Gauge (#14) TEW/AWM 1015 or 1230 wires, 6" (152mm) minimum exceeding from luminaire.

Hardware

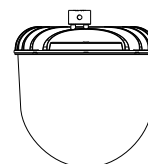
All exposed screws shall be complete with Ceramic primer-seal base coat to reduce seizing of the parts and offers a high resistance to corrosion. All seals and sealing devices are made and/or lined with EPDM and/or silicone and/or rubber.

Lens

LExF / LExS: Made of soda lime tempered glass lens, mechanically assembled and sealed onto the lower part of the heat sink.

LExA (Globe): Made of one-piece seamless injection-molded impact-resistant (DR) acrylic having an inner prismatic surface. The globe is mechanically assembled and sealed onto the lower part of the heat sink.

Prismatic globe: IP66 rated optical system, composed of individual pre-oriented lens to achieve desired distribution, assembled with globe having an inner prismatic surface permanently sealed onto the lower part of the heat sink.

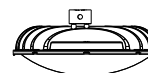


LE2A - Type II (ASYM) with globe (ACDR)

LE3A - Type III (ASYM) with globe (ACDR)

LE4A - Type IV (ASYM) with globe (ACDR)

Sag lens: IP66 rated optical system, composed of individual pre-oriented lens to achieve desired distribution, assembled with a tempered-glass sag lens permanently sealed onto the lower part of the heat sink.



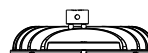
LE2S - Type II (ASYM) Sag glass lens

LE3S - Type III (ASYM) Sag glass lens

LE4S - Type IV (ASYM) Sag glass lens

LE5S - Type V (SYMM) Sag glass lens

Flat lens: IP66 rated optical system, composed of individual pre-oriented lens to achieve desired distribution, assembled with a tempered-glass flat lens permanently sealed onto the lower part of the heat sink.



LE2F - Type II (ASYM) Flat glass lens

LE3F - Type III (ASYM) Flat glass lens

LE4F - Type IV (ASYM) Flat glass lens

LE5F - Type V (SYMM) Flat glass lens

DMS60 Domus LED Post Top

Urban Luminaire

Specifications (continued)

Luminaire options

FN2: Decorative finial



FN3: Decorative finial



FN4: Decorative finial



FN6: Decorative finial



FN8: Decorative finial



FN9: Decorative finial

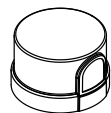


FNC: Finial painted copper

HS: House side shield

OVR: Override function

PH8: Photoelectric Cell,
Twist-lock Type.
Allows a 90° rotation.



PH9: Shorting cap, Twist-lock Type

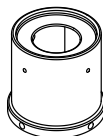
PHXL: Extended life photoelectric cell,
Twist-lock Type.
Allows a 90° rotation.



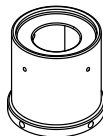
RCD7: Receptacle 7 pin



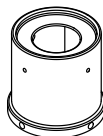
TN2.875: 2-7/8" dia. Tenon adaptor



TN3: 3" dia. Tenon adaptor



TN3.5: 3-1/2" dia. Tenon adaptor



SP2: Integral surge protector

WC: Without Cupola

Finish

In accordance with the AAMA 2603 standard. Application of polyester powder coat paint (4 mils/100 microns) with +/- 1 mils/24 microns of tolerance. The Thermosetting resins provides a discoloration resistant finish in accordance with the ASTM D2244 standard, as well as luster retention in keeping with the ASTM D523 standard and humidity proof in accordance with the ASTM D2247 standard. The surface treatment achieves a minimum of 2000 hours for salt spray resistant finish in accordance with testing performed and per ASTM B117 standard.

Finish Options Include:

BE2TX: Textured Midnight Blue
BE6TX: Textured Ocean Blue
BE8TX: Textured Royal Blue
BG2TX: Textured Sandstone
BKTX: Textured Black
BRTX: Textured Bronze
GN4TX: Textured Blue Green
GN6TX: Textured Forest Green
GN8TX: Textured Dark Forest Green
GNTX: Textured Green
GR: Gray Sandtex
GY3TX: Textured Medium Grey
NP: Natural Aluminum
RD2TX: Textured Burgundy
RD4TX: Textured Scarlet
TG: Hammer-tone Gold
WHTX: Textured White

LED products (manufacturing standard)

The electronic components sensitive to electrostatic discharge (ESD) such as light emitting diodes (LEDs) are assembled in compliance with IEC61340 5 1 and ANSI/ESD S20.20 standards so as to eliminate ESD events that could decrease the useful life of the product.

Quality control

Manufactured to ISO 9001 2015 standards and ISO 14001-2015 International Quality Standards Certification.

Certifications and Compliance

cULus Listed for Canada and USA.

