



**GENLYTE**  
**SOLUTIONS**

a signify business

# Office Product Guide

2024

# Tackle your lighting project quickly

Tight project timelines can't hold you back; get quality lighting delivered within 5-10 shipping days. Our solutions can light the way for your next project with the Design Ready portfolio.

The selected QuickShip high performance luminaires from Genlyte Solutions brands include Lightolier, Day-Brite, Chloride, and Stonco offerings.

## Illuminate your space with ease

Genlyte Solutions provides the lighting solution for every project. Whether it's lighting and connecting your public spaces, giving your space an energy-saving upgrade, or working on a yet-to-be constructed project, we've got you covered. Our Design Ready portfolio makes it easy for you to find highly configurable lighting with modern designs within your timeline and your budget.





# Design Build

Our stocking solutions are now ready to go with your stock and design ready needs



Stock ready  
Stock and Flow  
Ships in **2 days**



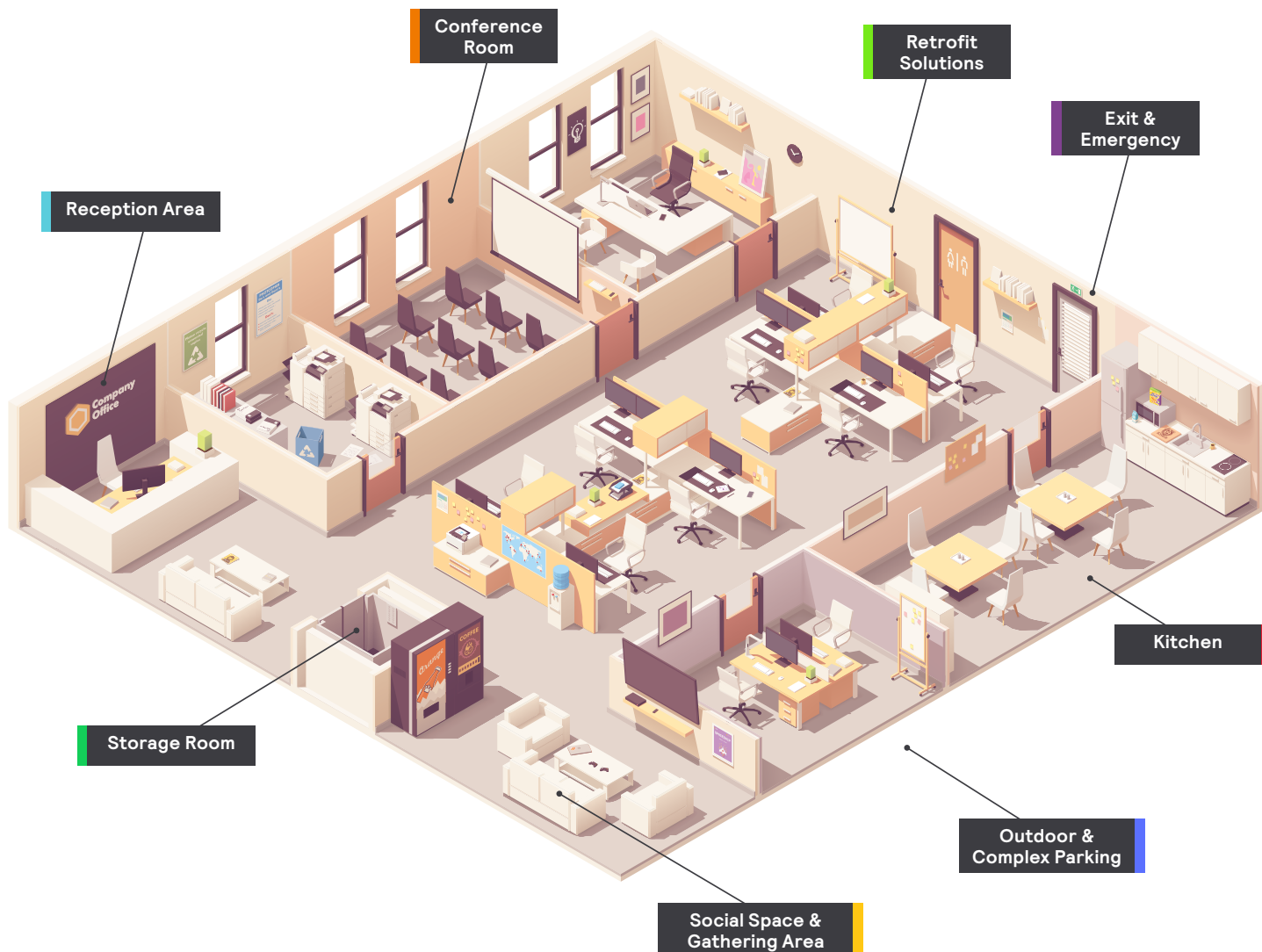
Design ready  
Design Build  
Ships in **5-10 days**

# Office applications

## Around the clock lighting solutions

Effective lighting design is crucial for office spaces, impacting staff morale, focus, and comfort. Well-designed lighting not only enhances concentration and productivity but also improves employees' mood, satisfaction, and well-being by minimizing eye strain and discomfort.

At **Genlyte Solutions**, our portfolio of lighting brands offers the perfect solutions to create an optimal office environment. Explore our product suggestions to elevate your workspace and foster a more productive and comfortable atmosphere for your team.





# ModuLyte

Benefit from budget-friendly, commercial grade quality downlighting

Frame-optional design architecture and modular optics that can be field or factory-installed, you can be confident that ModuLyte is equipped to support a variety of project conditions.

Meet deadlines and project schedules without the stress by quickly connecting the light engine to its driver via a screw-on Communications Multipurpose Plenum (CPM) cable.

Selectable CCT and lumen output options create peace-of-mind during design and installation. Convenient switches make it easy for contractors to toggle between options to ensure lighting creates the right environment on any project.



Product Highlight



Flexibility at your fingertips

**LIGHTOLIER**



Product Highlight

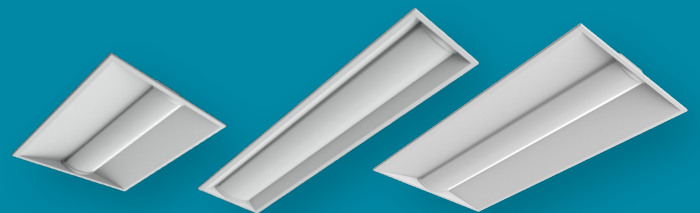
Slim, sturdy, and selectable

**Day-Brite**

# Selectable Troffer (DSRT)

Robust low glare luminaire designed to provide three lumen and three CCT field selectable options per size at 80CRI. Available for use in recessed, suspended, and surface mount applications with optional daylight and occupancy sensor.

DSRT is 120-277V (UNV), with 0-10V dimming, and a 3in deep housing.





Stock ready 2 day shipping


Design ready 5-10 day shipping

# Lobby & Meeting Rooms



## Reception Area

**Day-Brite**



**FluxGrid Recessed**

- High quality and performance for optimum energy savings
- Drivers and boards are easily accessible from below
- 3-1/8" deep low profile configuration
- Wireless control options available

Stock ready

Design ready

**Day-Brite**




**FluxSpace Strip**

- 4 different styles in a 4" housing
- State of the art smart lighting capabilities with adaptive and future proof controls
- Endless possibilities for a host of applications

Design ready

## Meeting and Conference Rooms

**Day-Brite**



**FluxGrid Recessed**

- High quality and performance for optimum energy savings
- Drivers and boards are easily accessible from below
- 3-1/8" deep low profile configuration
- Wireless control options available

Stock ready

Design ready

**Day-Brite**



**Selectable Troffer (DSRT)**

- Strong and well constructed 3in deep 5VA housing
- Field selectable lumens and CCT opt.
- Polystyrene diffuser provides visual comfort, even light distribution and high efficiency illumination
- Sensor versions available

Stock ready





# Kitchen

**Day-Brite**



**FluxStream Strip**

- 2', 3', 4' and 8' tandem lengths available to accommodate many field applications
- Frosted acrylic diffuser provides wide light distribution, superior glare control
- Diffuser and LED plate snap into place allowing tool-free access

Stock ready

Design ready

**Day-Brite**



**SofTrace Recessed**

- Ease of maintenance
- Optional occupancy and daylighting sensors
- Uniform, glare free light distribution
- Achieve energy efficiency targets and reduce energy-related costs

Design ready

**Day-Brite**



**SDS Selectable Strip**

- Frosted glare-free lens
- Simple mounting method
- CCT & Lumen selectability
- Durable construction
- Ease of installation and maintenance

Stock ready

**Day-Brite**



**NWL Selectable Wraparound**

- White polycarbonate housing
- Frosted polycarbonate lens for even, low glare lighting
- Hardware for surface mounting incl.
- Field CCT selectable for 3000K, 3500K or 4000K

Stock ready

Stock ready 2 day shipping

Design ready 5-10 day shipping

# Social Area & Outdoor



## Social Space & Gathering Area

LIGHTOLIER



### Commercial Retrofit

- 4 sizes to accommodate applications with varying ceiling heights
- Simplified installation
- 90 CRI for crisp color clarity
- 120-347V (UN3) voltage sensing driver
- 0-10V Dimming

Stock ready

LIGHTOLIER



### ModuLyte

- Field interchangeable downlight (wide/medium) and lensed wall wash optics
- 59° physical cutoff provides reduced high angle glare and low UGR to optimize visual comfort
- Field selectable for 5 CCT's and up to 3 lumen levels

Stock ready

Design ready

## Outdoor & Complex Parking

Stonco



### LytePro Area

- Mounting to round or square pole without need for accessories
- Large bolt spacing range for easy retrofit application
- Button or twist-lock photocell, motion response, and field adjustable wattage

Stock ready

Design ready

Stonco



### LytePro Garage & Canopy

- SpiroGuide light engine that reduces glare and increases uniformity
- Luminous white uplight option with a halo bezel that glows
- Dimming controls and UL924 emergency options
- Lightweight and "click!" no-screw surface mounting

Design ready

Stonco



### LytePro Wall

- Low-profile design
- Replacement for incandescent, compact fluorescent and HID lamp sources up to 320W
- Optical distributions offer full cutoff performance and excellent uniformity
- Mounts to a variety of junction box types or fastens directly to wall for seamless retrofitting

Stock ready

Design ready





# Storage Room



**Day-Brite**

**FluxStream Strip**

- 2', 3', 4' and 8' tandem lengths available to accommodate many field applications
- Frosted acrylic diffuser provides wide light distribution, superior glare control
- Diffuser and LED plate snap into place allowing tool-free access

Stock ready

Design ready

**Day-Brite**

**FluxStream Industrial**

- Ease of installation and maintenance
- Convenient specification
- Delivers up to 134 LPW
- Standard 0-10V dimming
- Multiple CCT and lumen options
- Multiple mounting methods

Stock ready

Design ready

**Day-Brite**

**FluxStream Sealed**

- Achieve energy efficiency targets and reduce energy-related costs
- Ease of maintenance
- Long lasting performance
- Reliable performance up to 122 LPW
- Optional occupancy sensors

Stock ready

Design ready

**Day-Brite**

**SDS Selectable Strip**

- Frosted glare-free lens
- Simple mounting method
- CCT & Lumen selectability
- Durable construction
- Ease of installation and maintenance

Stock ready


Stock ready 2 day shipping

Design ready 5-10 day shipping

# Exit/Emergency



CHLORIDE




**Value+**

- Snap together design
- Nicad battery
- Smaller compact housing
- Operating temperature range: 10°C (50°F) to 40°C (104°F)

Stock ready

CHLORIDE




**Value+ Low End Family**

- Snap together design
- Nicad battery
- Smaller compact housing
- Operating temperature range: 10°C (50°F) to 40°C (104°F)

Stock ready

CHLORIDE



**44R Line Edge Lit**

- A lower profile design is less obtrusive than traditional signs, making it more aesthetically appealing
- Ceiling, wall and end surface mounting

Stock ready





## Day-Brite



### SDS Selectable Strip

- Frosted glare-free lens
- Simple mounting method
- CCT & Lumen selectability
- Durable construction
- Ease of installation and maintenance

Stock ready

## LIGHTOLIER



### Commercial Retrofit

- 4 sizes to accommodate applications with varying ceiling heights
- Simplified installation
- 90 CRI for crisp color clarity
- 120-347V (UN3) voltage sensing driver
- 0-10V Dimming

Stock ready

# Get started with the Design Ready catalog



## Ready to create your vision?

Check out the Design Ready website and catalog for ordering information on the product families fit for bringing your Design Build project to life. Scan or click the QR code to learn more.







**GENLYTE**  
SOLUTIONS

GENLYTE

ГІСІМІСІ

**GENLYTE**  
**SOLUTIONS**  
a  Signify business

© 2024 Signify Holding. All rights reserved. The information provided herein is subject to change, without notice. Signify does not give any representation or warranty as to the accuracy or completeness of the information included herein and shall not be liable for any action in reliance thereon. The information presented in this document is not intended as any commercial offer and does not form part of any quotation or contract, unless otherwise agreed by Signify.

Signify North America Corporation  
400 Crossing Blvd, Suite 600  
Bridgewater, NJ 08807  
Telephone 800-555-0500

Signify Canada Ltd.  
281 Hillmount Road,  
Markham, ON, Canada L6C 2S3  
Telephone 800-668-9008

All trademarks are owned by Signify Holding or their respective owners.